

5 Capitol Avenue, Balnarring, Vic 3926

THE COAST

House For Sale

Friday, 8 March 2024

5 Capitol Avenue, Balnarring, Vic 3926

Bedrooms: 3

Bathrooms: 1

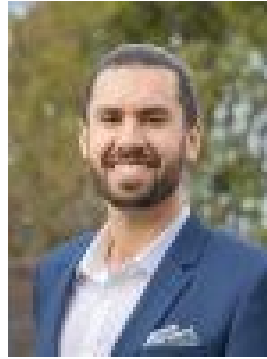
Parkings: 1

Area: 587 m2

Type: House



Jackie Wright
0359831980



Andrew Wright
0481310010

\$1,150,000 - \$1,250,000

"Lily Cottage" is ready for you to move right in and enjoy. With its Dormer windows and high pitched roofline, it's like an English-style summer cottage by the bay. No. 5 offers an excellent opportunity to own a three-bedroom family home in the highly sought-after beachside area of Balnarring, with sensational beaches and all the activities along and around the bay. Situated close to the village centre, everything you need is within easy reach; schools, sports clubs, wetland-bushland reserve, kinder, parklands, playground, and The Heritage, with the village centre just across the way. Enter through the picket fence gate and follow the meandering path to the north-facing deck and entry. Inside, you'll find polished floorboards in the main living room, featuring a brick open fireplace and direct access to the generously-sized covered deck—perfect for relaxed days at home. With cozy living and a country-style kitchen opening onto the covered deck, you'll have plenty of space for entertaining and family get togethers throughout the year. The kitchen boasts solid wood cabinetry, a walk-in pantry, slate tiled floors, and views over the deck to the rear garden, adding to the coastal cottage charm. Upstairs, two large double bedrooms and a smaller third bedroom await, along with a family bathroom. Downstairs, there's a second toilet off the laundry for added convenience. Nestled in a quiet court, this property's location is hard to beat. Call today to schedule your weekday or weekend private inspection. Features include: * Dining and separate living zone with access to the deck. * Covered deck (5 x 10 metres) with pergola and craft bench. * Ducted heating, cooling and open fire. * Lock up garage / workshop with access to the rear. * Land 587m² approx. General Residential Zone