

5 Central Avenue, Beaconsfield, WA 6162



House For Sale

Thursday, 11 April 2024

5 Central Avenue, Beaconsfield, WA 6162

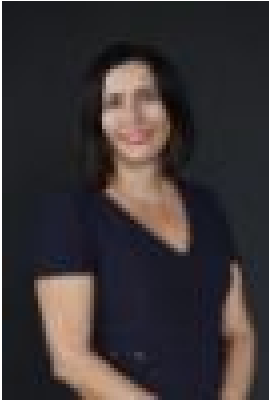
Bedrooms: 3

Bathrooms: 2

Parkings: 2

Area: 526 m2

Type: House



Marisa Rifici
0432729620

UNDER OFFER FIRST WEEKEND- MULTIPLE OFFERS

Welcome to 5 Central Avenue, an enchanting retreat nestled amidst the beauty of Beaconsfield. Step inside to discover a thoughtfully designed floorplan where the heart of the home revolves around a central kitchen, flanked by three bedrooms, two of which boast ensuite bathrooms. Additionally, a dedicated study space offers versatility to accommodate your lifestyle needs. The main floor is graced with slate tiles, while timber-look flooring seamlessly extends this natural elegance throughout the rest of the home. The open-plan kitchen and dining area effortlessly foster social connections, creating a welcoming space for gatherings and entertaining. Step outside onto the patio, where you can indulge in the beauty of the lush landscape and unwind amidst nature's tranquility. Outside, the allure continues with expansive yards at both the front and back. Mature trees and a serene water feature create a peaceful ambiance, while a fenced backyard spanning an impressive 526sqm features a sparkling swimming pool, perfect for family enjoyment. Ideally located just 5 minutes from the vibrant core of Fremantle and a mere 6 minutes from the picturesque South Beach, 5 Central Avenue offers more than just a residence - it promises a lifestyle enriched with convenience and leisure. Beyond its undeniable investment potential, 5 Central Avenue beckons you to embrace a life filled with endless possibilities. Explore nearby cafes, meander along coastal paths, immerse yourself in Fremantle's vibrant culture, and experience the charm of local festivals. Don't miss out on this extraordinary opportunity to make 5 Central Avenue your home. Additional features include:

- 3 bedrooms, 2 bathrooms, plus off-street parking
- Ducted evaporative air conditioning throughout
- Reverse cycle air-conditioning in lounge room & master bedroom
- Wood fire in main living area
- Gas log electric fire in lounge room
- Reticulated gardens
- Outdoor storage shed
- Plantation Shutters
- Front gates

For more information please contact Marisa Rifici on 0432 729 620

Rates & Local Information
Water Rates: \$1285.21 (2022/23)
City of Fremantle Council Rates: \$2390.41
Zoning: R20
Primary School Catchment: Winterfold Primary School
Secondary School Catchment: Fremantle College

PLEASE NOTE: While every effort has been made to ensure the given information is correct at the time of listing, this information is provided for reference only and is subject to change. It is recommended that you conduct your own due diligence before making any decisions based on this information.