

5 Coral Place, Ballajura, WA 6066



Sold House

Thursday, 5 October 2023

5 Coral Place, Ballajura, WA 6066

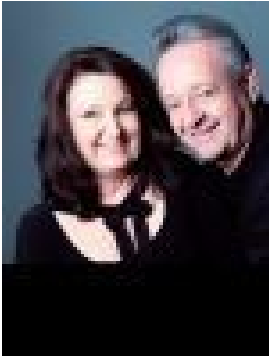
Bedrooms: 4

Bathrooms: 2

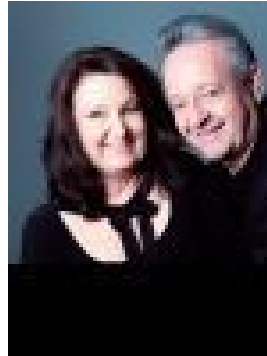
Parkings: 2

Area: 1004 m2

Type: House



Mark Passmore
0892750388



Debra Passmore
0411888138

Contact agent

...with an abundance of space, and something for everybody to enjoy! Sprawled across a generous 1004sqm block atop of a small quiet cul-de-sac, and fastidiously maintained by its original owners since new, this individually designed, "Like New" 5 bedroom, 2 bathroom home is the ULTIMATE family haven! The perfect platform to host and entertain guests in ultimate style, up front is a sumptuous formal living and dining area with built-in bar, whilst at its centre lies a stunning, newly renovated open plan chef's kitchen, overlooking both the expansive meals/activity area and cozy sunken lounge. Graced with soaring high ceilings and warmed by the flickering flames from the wood burning fireplace, this area is definitely the true heart of the home where most of your time will be spent. A wonderful oasis of tranquillity, the king-sized master suite with walk-in robe, ensuite and private courtyard is truly sumptuous, whilst outdoors, the lush wrap around backyard offers something for everyone to enjoy. With a large undercover alfresco ideal for entertaining, a grassed area for the kids, fully equipped powered workshop, brick and tile doghouse, PLUS array of fruit trees, you'll simply love it out here! Made perfect by its quiet and serene cul-de-sac location, with schools, parks, shops, public transport, and major arterial routes all nearby, and the CBD only 15kms away, 5 Coral Place has been a much-loved family home, full of cherished memories for the past 32 years. With the next chapter yours to write, don't delay and express your interest today! HIGHLIGHTS INCLUDE: • One owner original, built in 1989, and modelled off Summit Homes' Home of the Year - "The Madison". • High elevated position • Welcoming front verandah and entry porch with elevated leafy outlook • Large formal lounge and dining upfront, carpeted for comfort, with a built-in bar, ideal for entertaining • Renovated chefs kitchen featuring durable Epoxy benchtops, 900mm Bosch stainless steel cooktop & rangehood, Delonghi double stainless steel wall ovens, dishwasher, double stainless steel sink with water filtration tap, double fridge recess, ample counter space and a plethora of built-in storage • Cozy sunken lounge with wood burning fireplace • Large meals area, big enough to easily accommodate 10-12 guests • Separate kids' activity area • High raked ceilings to the main central living area • Sumptuous king-sized master suite with walk-in robe, ensuite and private courtyard, the ideal spot for a morning coffee • 3 additional well-proportioned bedrooms in their own wing at the rear, all with built-in robes, serviced by the practical family bathroom with separate shower and bathtub • Flexible study/5th bedroom upfront • Plush new carpet where featured • Plenty of built-in storage throughout • 8 Solar Panels • Roller shutters to the front and western side of the home • Paved undercover alfresco with built-in cabinetry and gas point, which could easily be made into an outdoor kitchen • Manicured bore reticulated gardens, back and front, featuring an array of fruit trees including Peach, Orange, Apple, Mango & Fig, plus grape vines and raised vegetable gardens • Freestanding powered workshop with wrap around benches, island bench and sink • Bird aviary • Plenty of space for a pool if desired • Enclosed dog area with a brick and tile dog house • Double front carport, plus drive through access down the side for an additional vehicle For further details, please contact Mark & Debra Passmore on 0411 870 888 / 0411 888 138 or email mark@passmore.com.au***Passmore Real Estate wishes to advise that whilst every care is taken in the preparation of these details, they MUST be verified if relied upon, before entering into any Contract of Sale***