

5 Eaglefield Street, Bohle Plains, Qld 4817



House For Rent

Friday, 19 April 2024

5 Eaglefield Street, Bohle Plains, Qld 4817

Bedrooms: 3

Bathrooms: 2

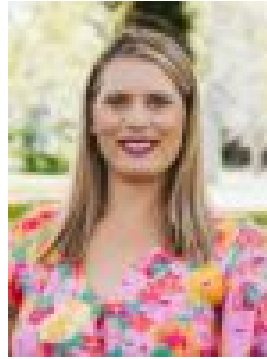
Parkings: 2

Area: 510 m2

Type: House



Jacquelyn Shimeld
0747504000



Vittoria Marques
0416019839

\$625 per week

Nestled in the highly desirable suburb of Bohle Plains, this almost new home offers an exceptional opportunity for those seeking modern living combined with family-friendly charm. Boasting 3 bedrooms and 2 bathrooms, this residence is designed to accommodate your every need. Step inside and be captivated by the inviting ambiance of the open plan living area and kitchen, providing a spacious and seamless flow for entertaining and everyday living. The home theatre offers the perfect space to unwind and enjoy your favourite movies or TV shows. The spacious kitchen is a chef's delight, complete with a generous walk-in pantry, ensuring ample storage for all your culinary essentials. The back patio extends the living space, offering an ideal area for outdoor relaxation and dining. The open plan design seamlessly integrates the indoor and outdoor areas, creating a perfect setting for gatherings and enjoying the beautiful weather. The family-friendly nature of the suburb ensures a safe and welcoming environment for you and your loved ones.

Key features:

- Almost new home in sought-after Bohle Plains
- Fully Irrigated Yard
- Home theatre for entertainment indulgence
- Spacious kitchen with a large walk-in pantry
- Located in a family-friendly suburb

ABOUT HARRIS CROSSING

Located in the sought-after area of Bohle Plains in the well-known Harris Crossing estate, you have the chance to become part of a community that is only minutes away from Townsville's city centre, Harris Crossing gives you a new lifestyle choice. Surrounded by lush parkland and bordered by the Bohle River, Harris Crossing is located close to all the day-to-day services you need:

- Brand new childcare centre located within Harris Crossing
- 3 Minutes to Willows Shopping Centre, Reading Cinemas and the Cannon Park Entertainment Precinct.
- 4 Minutes from the Riverway Lagoons and Arts Centre.
- 4-6 Minutes from quality childcare, primary and high schools.
- Walking distance to fresh water fishing holes along the banks of the Bohle River.
- Located in the heart of Thuringowa Central, just 12km from the Townsville CBD.
- Enjoy more than 70 hectares of proposed parkland and green space which will include playgrounds, boardwalks, picnic areas, walking trails and natural riverbank access to the banks of the Bohle River.
- With the Ring Road close by, you're well connected to Lavarack Barracks, Townsville Hospital and JCU, all within a few minutes' drive.

Don't Delay, Inspect Today!

Please note - All parties should make and rely upon their own enquiries in order to determine the accuracy of the information supplied. Some file photographs in use may have been taken some time ago or modifications have been conducted at the property since the photography. Please rely on your own inspection and investigations to determine if this property is suitable for your requirements and the information provided is general in nature. Ray White Townsville bears no liability for any loss sustained due to inaccuracy or omission.