

5 Ellenborough Ave, Ormeau Hills, QLD, 4208

Sold House

Friday, 12 May 2023



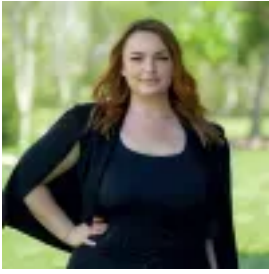
5 Ellenborough Ave, Ormeau Hills, QLD, 4208

Bedrooms: 4

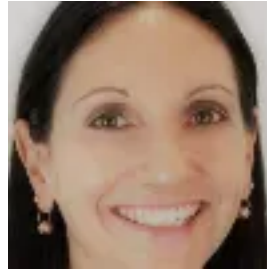
Bathrooms: 2

Parkings: 2

Type: House



Savannah Davis



Renee Hudson

Elegant Metricon Designed Steel Frame Home

This is an amazing opportunity to own this stunning quality Metricon built steel framed home! Designed for contemporary living and year-round entertaining. Located in the beautiful Ormeau Hills on a 448m² block, offering the ultimate chance to indulge in a family-friendly lifestyle.

Be blown away by the WOW factor the moment you witness just how much space this home is boasting! With 2 large separate living areas everyone will have the room and comfort they desire. Enjoy the simplicity, elegance and space with a seamless flow connecting indoor-outdoor living and easy-care gardens, this home has a real focus on entertaining. They say the kitchen is the heart of the home! So true, the kitchen is in the centre of the home, perfect for family & friends.

Property Features:

- Master bedroom with walk in robe and ensuite featuring double basins
- 3 great sized bedrooms all with built in robes
- Central well-appointed kitchen overlooking the dining and family living area, with stone bench tops.
- Separate lounge and family living areas
- 2 separate outdoor entertaining decks - accessible via side stacker doors off the kitchen and the other via the back door.
- 6 zone fully ducted air conditioning
- Steel frame
- 5000L water tank plumbed to laundry and toilet
- High ceilings through out
- Solar system
- Fully insulated
- Garden irrigation system
- NBN availability

Ormeau Hills was designed for a lifestyle of convenience and community, positioned minutes from your local school, walking tracks and parks, train station, child care, major shopping centers, the best doctors and easy access to M1 providing a short commute to either Brisbane or Gold Coast.

Disclaimer: This property is being sold by auction or without a price and therefore a price guide cannot be provided. The website may have filtered the property into a price bracket for website functionality purposes.

For all of your home loan needs, please contact our friendly broker, Conrad Palmer on 0410 296 050.

All inspections will be conducted adhering to COVID-19 Social Distancing Guidelines and Ray White's no-contact policy.

Important: Whilst every care is taken in the preparation of the information contained in this marketing, Ray White will not be held liable for the errors in typing or information. All information is considered correct at the time of printing.