

5 Erin Drive, Fraser Rise, Vic 3336



House For Rent

Friday, 5 April 2024

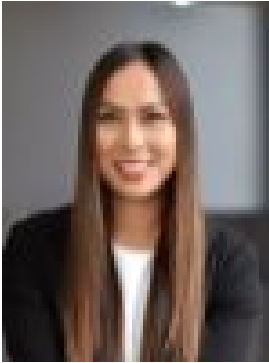
5 Erin Drive, Fraser Rise, Vic 3336

Bedrooms: 4

Bathrooms: 2

Parkings: 3

Type: House



Iris Hsu

0413393888

Enquire Now: \$550 Per Week

White Knight Estate Agents proudly presents you this brand new home. This modern family home ticks all the boxes when it comes to the quality of the highest standards. The property is located just minutes away from schools and childcare facilities ranging from early care to secondary education institutions and also at a manageable distance to popular Bacchus Marsh Grammar Early Learning Centre and Woodlea Early Education. The stylish design of this home offers a free-flowing floor plan which is both practical and aesthetically appealing. Key Features Includes :# Modern Façade# High Ceiling # House Alarm# Master Bedroom with En-suite & spacious walk in robe# 900 mm Stainless steel appliances# Dishwasher# Ducted Heating and evaporative cooling in all bedrooms and living in area# Remote controlled double car garage# Corner lot with a big sideyard = 2 m# Full landscaping to be completed prior to move in# Concrete all around the house# Perfect location for home businesspeople because of close proximity to freewayYour new estate has an abundance of amenities in the pipeline, with local development plans. Watergardens station is minutes' drive from this house with trains travelling to CBD express in just 29 minutes. It's an effortless trip to the heart of Melbourne's CBD. It's also the perfect fit for active lifestyles, workout at one of the nearby sporting facilities, or start your day with a coffee at the local Shopping Centre - the choice is yours! It is an address perfectly positioned for convenience and growth. A place where you will take pride in your community and where your neighbours will become your friends. If you are looking for convenience and comfort, then look no further. This beautiful property can be yours. Note: Every care has been taken to verify the accuracy of the details in this advertisement, however, we cannot guarantee its correctness. Prospective tenants are requested to take such action as is necessary, to satisfy themselves of any pertinent matters. The artificial grass and landscaping shown at all the places in the advertising of the property are not real and are for illustration purpose only. Kitchen appliances will be installed before move in. Make and model details are available on request.