

5 Galactic Drive, Dunmore, NSW 2529



Duplex/Semi-detached For Sale

Sunday, 22 October 2023

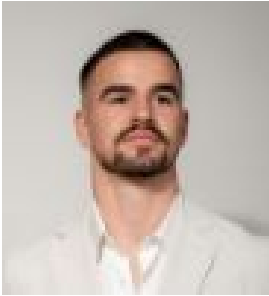
5 Galactic Drive, Dunmore, NSW 2529

Bedrooms: 4

Bathrooms: 2

Parkings: 2

Type: Duplex/Semi-detached



Cooper Askew

0484094814

\$899,000 - \$949,000

Now is the perfect opportunity to purchase these brand new homes featuring cutting-edge design, superior quality craftsmanship and state-of-the-art finishes located in one of the Illawarra's most sought after suburbs. From the moment you walk through the front door, you will be hit with an abundance of natural light created by clever design aesthetics. Featuring spacious living spaces, with four bedrooms, The luxurious master contains custom built wardrobes & an ensuite that is sure to impress. The state-of-the-art island kitchen and adjoining butler pantry are designed as both a high performance work space and a place of beauty. For the entertainer, the open plan kitchen, living, dining transition through the superb all-seasons alfresco zone, overlooking the fully fenced back yard is a fabulous feature. These extraordinary residences are positioned within close proximity to the Links golf course, world class Shell Cove marina precinct, premier schools, public transport, the princess highway & Shellharbour junction shopping centre. Please contact Cooper Askew on 0484 094 814 for more information.