

5 Idalia Court, Branyan, Qld 4670



Sold Acreage

Tuesday, 27 February 2024

5 Idalia Court, Branyan, Qld 4670

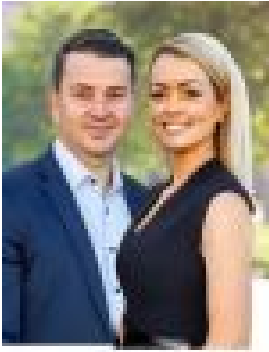
Bedrooms: 4

Bathrooms: 2

Parkings: 5

Area: 2081 m2

Type: Acreage



Daniel KristyLee Anderson
0413205827



Team Anderson Gail Lorberg
0432760266

\$810,000

Prepare to be captivated by this remarkable family home. From its impeccable presentation and charming front façade, to its tranquil surroundings, this property offers a range of features and benefits that will cater to everyone in your family. Designed and constructed with a strong emphasis on quality, this modern home welcomes you with an open plan living/dining and kitchen area that seamlessly connects to the undercover entertainment space. From here, you can enjoy the picturesque view of the expansive private yard and the impressive shed. PROPERTY FEATURES INCLUDE:- Step into a warm and inviting front entry that instantly makes you feel at home- Two generously sized lounge areas provide ample space for furniture placement, with the second lounge area serving as a traditional media room.- With a total of 4 bedrooms, each equipped with built-in robes, carpet, and fans, this home offers comfortable accommodation for the whole family- The master bedroom boasts an en-suite and a walk-in robe.- The ultra-modern bathrooms, including the en-suite and main bathroom, are both spacious and feature a bathtub in the main.- Stay comfortable year-round with the large reverse cycle air-conditioner in the media room and three of the bedrooms.- The kitchen offers ample bench and cupboard space, a walk-in pantry, breakfast bar, dishwasher, wall oven, electric cooktop, and rangehood.- Enjoy the convenience of side access to the impressive 7m x 9m powered high clearance shed, complete with three roller doors and power.- Additional features of this property include security screens throughout, plantation shutters, solar power, beautifully landscaped gardens, manicured lawn and town water.- The outdoor area is perfect for entertaining, boasting a generous size and privacy. Just a few steps away, you'll find a second outdoor area featuring a 16-person spa that is included in the sale.- Situated in a quiet cul-de-sac, this stunning property is just minutes away from parks, walking tracks, and only a 15-minute drive to the CBD. It is also conveniently located close to multiple schools, day care facilities, and the Sugarland Shopping Centre. This property exudes a warm and homely atmosphere, making it the perfect small acreage retreat close to all amenities. The owners have poured their heart and soul into creating and maintaining this dream package, and it's now ready for a new owner to simply move in and enjoy. For more information or to arrange a private inspection, please contact Daniel & Kristy-lee Anderson today on 0413 205 827. Keep an eye out for the scheduled open home times as well.*Whilst every endeavour has been made to verify the correct details in this marketing neither the agent, vendor or contracted illustrator take any responsibility for any omission, wrongful inclusion, misdescription or typographical error in this marketing material. Accordingly, all interested parties should make their own enquiries to verify the information provided.The floor plan included in this marketing material is for illustration purposes only, all measurement are approximate and is intended as an artistic impression only. Any fixtures shown may not necessarily be included in the sale contract and it is essential that any queries are directed to the agent. Any information that is intended to be relied upon should be independently verified.*