

5 Lapwing Close, Shearwater, Tas 7307

Residential Land For Sale

Wednesday, 8 May 2024

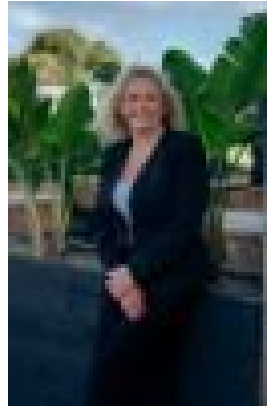
5 Lapwing Close, Shearwater, Tas 7307

Area: 741 m2

Type: Residential Land



John Price
0439340280



Corinne Price

\$259,000

Located in the popular and fast-growing community of Shearwater is this flat and level building allotment of 741m². With all services connected, the block is ample in size for a generous home site or villa development (STCA). With a wide frontage and with the rear of the block facing north providing all-day sun for a home's main living areas, it is perfect for a smart solar passive design. Situated in a quiet and private cul de sac close to local shops, beaches, primary school, resort and golf course, it is the ideal place to build your dream home and enjoy the most relaxed of coastal lifestyles. • Large 741m² land size • All services connected • Wide frontage • Sunny aspect • Quiet cul de sac position