

5 Masthead Place, Berkeley, NSW 2506



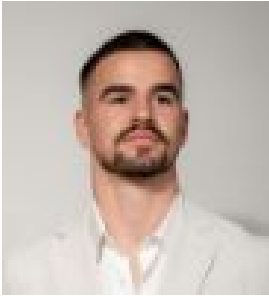
Sold Residential Land

Saturday, 23 December 2023

5 Masthead Place, Berkeley, NSW 2506

Area: 580 m2

Type: Residential Land



Cooper Askew
0484094814

\$385,000

Serenely positioned yet so close to local conveniences, this Elevated 580m² vacant lot provides an eye-catching opportunity for your long-awaited dream home. With lake and mountain panoramic views this corner block is located in a quiet cul de sac and just a short drive to lake foreshores, shops and schools. DA approved architect plans for a modern design 4 bedroom home plus a granny flat including a double lock up garage. Easy access to the Freeway. Short drive to lake foreshores, shops and schools. Please feel free to contact us to request a copy of the DA approved plans. Please contact Cooper Askew on 0484 094 814 for more information.