

5 Nayler Crescent, Warrnambool, Vic 3280



Sold House

Friday, 23 February 2024

5 Nayler Crescent, Warrnambool, Vic 3280

Bedrooms: 7

Bathrooms: 3

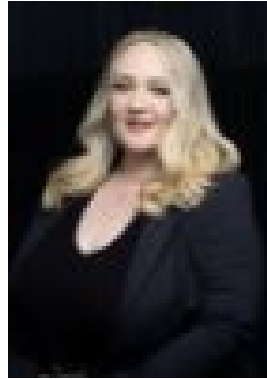
Parkings: 2

Area: 1300 m2

Type: House



Tessa Stephens
0400680566



Monique Brooks
0402740802

Contact agent

Behind a large privacy fence with established trees and gardens, stands 5 Nayler Crescent on a 1300sqm allotment. A spacious family brick home, built with space in mind, this commanding property has a functional floorplan with room to grow. Built in the mid 1980s, this family home is a sanctuary within Warrnambool that will leave you impressed. This double storey residence consists of a grand 1980s entry with expansive formal lounge that connects to the formal dining, heated with a gas log fire. The right wing of the home is made up of 4 large bedrooms each with built in robes, whilst the master suite includes ensuite and expansive walk-in robe with external walk through. The family bathroom includes both shower, bath, double vanity and timeless timber panelling, this bathroom is sure to catch the eye. With a large open plan family living, kitchen and dining at the rear, the kitchen offers large stone benchtops, walk in pantry, triple sink, stainless steel appliances and a focal point to all conversation. The upper level could easily be a home studio or kids retreat with a large rumpus room and three additional bedrooms each with robes and an additional bathroom and toilet. With the potential of up to 7 bedrooms or 6 with 2 home offices, you will be spoilt for options in such a roomy home. Outside is surrounded by an approximate 1300sqm block, north facing and private yard, large double garage with workshop and storage space. Located within walking distance to primary and secondary schools. The ultimate family home has never been so convenient. With short settlement options available, going to Auction Saturday 16 March. Be sure to venture beyond that large private front fence and see what lies beyond.