

5 Park Close, Heathmont, Vic 3135

Unit For Sale

Friday, 19 January 2024

5 Park Close, Heathmont, Vic 3135

Bedrooms: 2

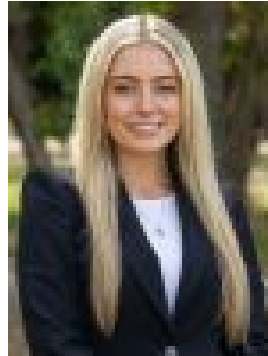
Bathrooms: 1

Parkings: 2

Type: Unit



Louise Carrigg



Ella Rait

0424669181

\$600,000 - \$640,000

Representing the ideal lifestyle for couples, downsizers, young families and investors, this exquisite unit will have you falling head over heels in love with its spacious dimensions, fabulous resident facilities and quiet position in a friendly, community-based complex. Stepping inside, the home's sequence of spaces starts with a dining room boasting cathedral ceilings and sliding doors that flood the space with sunshine, whilst offering access out onto a lovely front courtyard featuring synthetic lawn. The adjacent kitchen is well-equipped for those who love to cook, boasting Bosch appliances, LG dishwasher, double stainless steel Franke sink, glass splashbacks plus a breakfast bench overlooking a 2nd private yard. Captivating cathedral ceilings continue through to the incredibly spacious lounge room that's been beautifully detailed with a skylight and stylish built-in cabinetry featuring a fully upholstered bench seat with substantial additional storage. From here, sliding doors provide easy access out to the backyard where you'll find tidy paving, synthetic lawn and high privacy hedges. The two bedrooms are clustered together and both benefit from carpeting, built-in robes plus split system heating/air conditioning units and are serviced by a family bathroom with elegant claw foot bath, separate toilet and full-sized laundry. Appealing extras include split system heating/air conditioning, security alarm, double glazing throughout, double garage with internal access and additional parking, plus access to a communal tennis court, swimming pool and games room. Nestled in a location that delivers excellent connectivity to an abundance of prized schools and local amenities including, Tarralla Kindergarten, Tinternvale Primary School, Heathmont East Primary School, Tintern Grammar, Aquinas College, Gracedale Park with its off-leash dog area and tennis club, Tarralla Creek Trail, Heathmont Golf Park, Heathmont shops and trains, buses, Eastland Shopping Centre plus major road arterials.