

5 Sapphire Drive, Rutherford, NSW 2320



Sold House

Monday, 14 August 2023

5 Sapphire Drive, Rutherford, NSW 2320

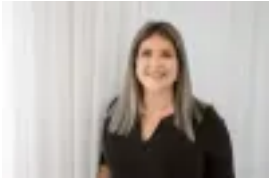
Bedrooms: 4

Bathrooms: 2

Parkings: 2

Area: 767 m2

Type: House



Alana Barker
0249341901



Sophie Abela
0249341901

\$671,000

Welcome to this spacious and inviting family home in the desirable neighbourhood of Rutherford. This property offers a wonderful living experience for you and your loved ones. Step inside and discover the features that make this house an ideal choice for comfortable living. Upon entering, you'll immediately notice the abundance of space and versatility. The home boasts two separate living spaces, allowing for flexibility and accommodating various activities. Whether you desire a quiet reading nook, a cosy movie night in the media room, or a lively gathering in the main living/dining room, there is a space to suit every occasion. The heart of the home lies in the well-equipped kitchen, designed for both functionality and style. The kitchen features a gas burner cooktop, allowing for precise temperature control and efficient cooking. A dishwasher is included for added convenience, making clean-up a breeze. With overhead cupboards, you'll have plenty of storage space for all your kitchen essentials. The large island bench provides additional workspace and serves as a gathering point for family and friends, whether it's for meal preparation or casual conversations. The central living/dining room, offering a perfect space for hosting guests and enjoying quality time with family. The open-plan layout seamlessly connects the living area and dining space, effortlessly facilitating entertaining and socialising while preparing meals. Embrace the harmonious flow from the dining area to the outdoors, creating an idyllic setting for alfresco dining and entertaining. Immerse yourself in nature's embrace, relishing the beautiful weather as you extend your living space outdoors. Whether it's hosting a delightful barbecue, savouring a cup of coffee on the patio, or simply unwinding in the fresh air, this outdoor area elevates your overall living experience, enriching your everyday moments. Enhancing the comfort of the living/dining area, the home is equipped with a reverse cycle split system. This modern heating and cooling system provide year-round climate control, ensuring a comfortable living environment regardless of the weather outside. Whether you seek respite from scorching summer days or desire cozy warmth during chilly winters, the reverse cycle split system guarantees optimal indoor comfort for you and your family. Indulge in the privacy and luxury of the master bedroom, which boasts an ensuite bathroom and a spacious walk-in wardrobe. The master suite is thoughtfully separated from the children's wing, where the other three bedrooms are located, each featuring built-in wardrobes. Situated on a generous 767m² block, the backyard that truly stands out. Step outside and be welcomed by a sprawling outdoor space that beckons you to relax, engage in playful activities, and forge unforgettable memories. The expansive backyard provides abundant room for various pursuits, whether you wish to host lively gatherings, set up a play area for children, or simply find solace in nature's embrace. Embrace the freedom to unleash your gardening aspirations and transform this canvas into your personal sanctuary. Located in the family-friendly neighbourhood of Rutherford, this outstanding property offers more than just a beautiful backyard and comfortable living spaces. Convenience is truly at your doorstep, as the property is conveniently located only a 5-minute drive from Rutherford Shopping Centre. This ensures easy access to a range of retail stores, supermarkets, and amenities, making it effortless to fulfil your everyday needs. In addition, the renowned Stockland Green Hills Shopping Complex is just a short 15-minute drive away, offering an extensive selection of shopping, dining, and entertainment options for you to indulge in. Moreover, this property is a highly valuable rental investment opportunity. The property's prime positioning near a wealth of amenities, schools, and shopping centres further enhances its rental potential. Tenants will enjoy the convenience and accessibility this location offers, coupled with its enticing array of features, makes it an appealing prospect for investors. Capitalise on the strong rental demand in the area and maximise your investment returns with this exceptional property. Take the opportunity to find out more and make this exceptional property yours by contacting the dedicated team at Valley Estate Agents today to start the journey towards owning 5 Sapphire Drive Rutherford. Disclaimer: The information contained herein has been given from sources, we believe to be reliable. Valley Estate Agents Pty Ltd does not warrant or guarantee its accuracy of the information and we recommend that all potential purchasers should make their own investigations before purchasing.