

5 Shell Close, Croudace Bay, NSW 2280



Sold House

Saturday, 27 April 2024

5 Shell Close, Croudace Bay, NSW 2280

Bedrooms: 3

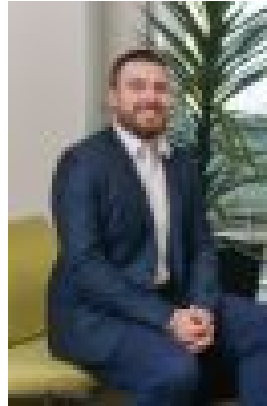
Bathrooms: 2

Parkings: 2

Type: House



Brendan Walsh
0249048400



James Tozer
0249048400

\$960,000

Set in a peaceful neighbourhood close to Croudace Bay Park this 3 bedroom brick residence delivers a comfortable retreat for the whole family. Sitting on a 774sqm allotment with double garage, enclosed outdoor entertaining & landscaped grounds this property is immaculately presented & is all set for you to move in & enjoy this idyllic setting. Offering a functional design with formal living area, spacious open kitchen with island bench & a separate dining space. This property is filled with natural light throughout & is complete with modern downlights, ceiling fans & split system air conditioning. All 3 bedrooms are fitted with built-in robes with the master featuring a separate ensuite. The home has a lovely street presence & is within 500m to local sporting field & park. Offering easy access to Lake Macquarie Square Shopping Centre, Warners Bay Foreshore & Belmont CBD this home offers convenience for all. This is a perfect family home in a peaceful setting.- Immaculate 3 bedroom brick home- Master bedroom with ensuite- Enclosed entertaining area- Updated open plan kitchen with large island bench- Functional 3 way bathroom- Built-in robes in all bedrooms- Multiple living areas & separate dining- Landscaped grounds, approx. 774sqm- Double garage with automatic doors - Separate garden shed- Walking distance to Croudace Bay Park- Only 200m to local sporting fields- Less than 2km to Valentine Bowling Club- Approx. 5km to Warners Bay Foreshore