

5 Tullamarine Drive, Robina, Qld 4226



Sold House

Wednesday, 22 November 2023

5 Tullamarine Drive, Robina, Qld 4226

Bedrooms: 4

Bathrooms: 2

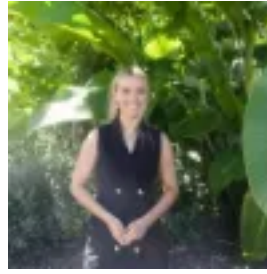
Parkings: 2

Area: 496 m2

Type: House



Lee McFarlane
0755531100



Laura Hardwick
0432324538

\$1,400,000

Step into this opulent abode in a premiere Robina street, where luxury and practicality intertwine. The lounge room beckons with soaring three metre walls, a captivating sandstone fireplace and oak hybrid flooring. Floor-to-ceiling curtains frame the scene, where you can enjoy cozy evenings by the electric fire. VJ panelling and a custom-built curved window draw your gaze to the pool, or you can immerse yourself in the calming study nook with high-end Bora Bora palm wallpaper. Sliding doors in the lounge lead out to the large, flat, private front yard, embraced by new Hampton style fencing. As you traverse into the heart of the home, the kitchen unfolds as a culinary and designer masterpiece with shaker cabinets, timber accents, brass tapware, brown Carrara splashback tiles, white granite sink and large stone island bench. The Italian DeLonghi appliances with extended warranty promise culinary excellence. The kitchen seamlessly blends with the second living area and dining room, with its three metre walls, high-end linen wallpaper capturing the arch theme, floor-to-ceiling curtains and hybrid oak-colored laminate flooring. Each bedroom of the home tells a unique story. The master bedroom is your personal retreat, where plush carpets cradle your every step. His and her mirrored wardrobes offer ample hanging space, while a swing chair invites you to relax and look out to the Alfresco and pool. The luxurious ensuite brings an element of calm and warmth, with brass lighting, travertine-look tiles, brass tapware, frameless shower screen and fluted double vanity basins. Bedroom two unfolds with two built-in robes granting you private access to the main bathroom which is a narrative of soothing perfection, with a 1700 luxe freestanding bathtub, brass tapware, arch mirror and travertine-look tiles. Bedroom three is embraced by white walls, floor-to-ceiling curtains, plush carpets and subtle brass finishes, designed for comfort and relaxation. The fourth bedroom is a place of sophistication and space. Once you walk through the unique custom arched door, you will be greeted by soaring three metre walls and extra high wardrobe and stunning views of the pool area. Step outside onto the large alfresco deck with inbuilt BBQ and bar fridge, and enjoy the practical and visual spectacle of the new fully tiled plunge pool with spa jets, inviting you to script your own moments of leisure and entertainment as you enjoy the rest of this fully fenced and private backyard adjacent to peaceful parklands. The large laundry is also themed with wood tones, brass handles, white ceramic farmhouse sink and shaker cabinetry, which is adjacent to the large double lock up garage with brand new roller door. Located in the heart of Robina a short distance from Bond University, The Glades Golf Club, Palmer Colonial Golf Course, Robina Town Centre, CBus Super Stadium, Robina Hospital, Robina State School, Varsity Lakes Day Hospital and many local trendy cafes and restaurants. Other features for this home include:

- Solar panels for energy efficiency
- Ceiling fans in all bedrooms
- Reverse airconditioning in Master, Living and Lounge areas
- Full roof restoration and repaint
- Brand new driveway in paperbark tonings

This property is being sold by auction or without a price and therefore a price guide cannot be provided. The website may have filtered the property into a price bracket for website functionality purposes. We have in preparing this information used our best endeavours to ensure that the information contained herein is true and accurate, but accept no responsibility and disclaim all liability in respect of any errors, omissions, inaccuracies or misstatements that may occur. Prospective purchasers should make their own enquiries to verify the information contained herein. * denotes approximate measurements