

5 Vantage Place, Redbank Plains, Qld 4301

STRUD

House For Sale

Wednesday, 22 May 2024

5 Vantage Place, Redbank Plains, Qld 4301

Bedrooms: 4

Bathrooms: 2

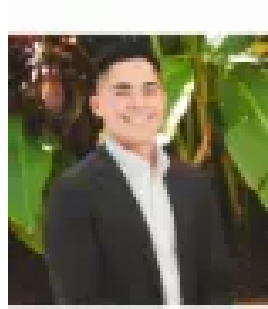
Parkings: 2

Area: 636 m2

Type: House



Terence McLeod
0434436762



Peter Ta
0426668695

OFFERS OVER \$699,000

Nestled in a tranquil cul-de-sac, this modern family home offers a serene retreat with all the amenities that Redbank offers at only a stones throw away. Tucked away in a quiet corner, you'll enjoy the peace and privacy that comes with this secluded location. As you step inside, you're greeted by the spacious and light-filled living area, designed with modern families in mind. The dual living spaces provide ample room for relaxation and entertainment, catering to the needs of every member of the family. Whether you're hosting gatherings with friends or enjoying quiet evenings with loved ones, there's a space for every occasion. The home boasts modern finishes and thoughtful touches throughout. The four bedrooms offer plenty of space for the whole family with Built in robes and Walk in Robe for your master bedroom. One of the highlights of this property is the deck area that overlooks the breathtaking bushland backdrop. The deck is the perfect spot for alfresco dining, weekend barbecues, or simply unwinding after a long day, all while being surrounded by the beauty of nature. For those who love the outdoors, the huge backyard is a true haven. Let your imagination run wild as you envision endless possibilities for outdoor activities, from playing sports with the kids to gardening or simply basking in the sunshine. With plenty of space for children and pets to roam freely, this backyard is sure to be the heart of many cherished family memories. Conveniently located close to schools, shops, and public transport, this property offers the perfect balance of seclusion and accessibility. Whether you're looking for a peaceful retreat from the hustle and bustle or a place to raise a growing family, this modern family home ticks all the boxes. Location: • 33 min drive to Brisbane CBD • 21 min drive to Ipswich CBD • Just down the road from Staines Memorial • Minutes away from Orion Shopping Centre and Mountview Shopping Centre Disclaimer: STRUD Property has taken all reasonable steps to ensure that the information contained in this advertisement is true and correct but accept no responsibility and disclaim all liability in respect to any errors, omissions, inaccuracies or misstatements contained. Prospective purchasers should make their own enquiries to verify the information contained in this advertisement.