

**50/21 Shute Harbour Road, Cannonvale, Qld 4802**



**Unit For Sale**

Wednesday, 17 April 2024

50/21 Shute Harbour Road, Cannonvale, Qld 4802

**Bedrooms: 2**

**Bathrooms: 2**

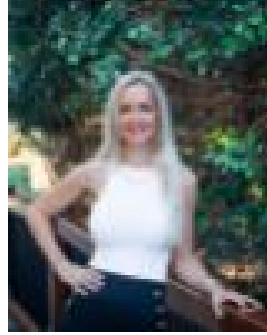
**Parkings: 1**

**Area: 152 m2**

**Type: Unit**



Stephanie McWhirter  
0749488500



Clarice Davis  
0749488500

## Offers

Discover the ultimate tropical lifestyle in this private superb 2-bedroom, 2-bathroom apartment located at 50/21 Shute Harbour Road. Boasting breathtaking mountain views and overlooking the serene parklands, this property features bright interiors with brand new down lights throughout, 9ft ceilings, a spacious air-conditioned lounge room, well-appointed kitchen with stone benchtops and open plan flow. Both bedrooms are generously sized with the master including an ensuite, walk-in robe, and a private balcony to enjoy the stunning scenery. The apartment is also freshly painted with security screens throughout and new ceiling fans installed. The Baybreeze complex offers 2 sparkling pools, lush, landscaped gardens, and plenty of visitor parking areas for your guests. Conveniently located close to schools, shops, bus stops and just a short drive away from Airlie Beach, this is the perfect opportunity to live the ultimate tropical lifestyle. Book an inspection today!