

50 Bedivere Drive, Ormeau, Qld 4208

House For Rent

Saturday, 4 May 2024

50 Bedivere Drive, Ormeau, Qld 4208

Bedrooms: 4

Bathrooms: 2

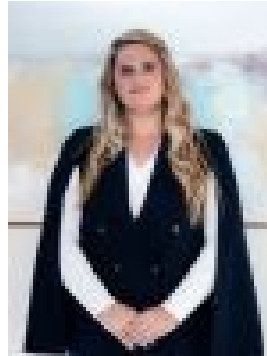
Parkings: 2

Area: 576 m2

Type: House



Zoe Ray
0466909339



Michelle Osmond
0755175282

\$730.00 per week

This lovely 4-bedroom home is ready and waiting for you now. This property is centrally located in Ormeau with easy access to the M1 north and south. 50 Bedivere Drive, Ormeau features 4 bedrooms, 2 living areas, a double lock garage and a large outdoor entertaining area at the rear of the property. The central kitchen features a 600mm ceramic cooktop, wall mount oven, pantry, brand new dishwasher and microwave space. This delightful kitchen overlooks the dining area as well as the backyard and the outdoor entertaining area. The large master bedroom features a walk-in robe plus an ensuite, ceiling fan and direct access out onto the undercover alfresco area through a sliding door. Each of the remaining bedrooms feature built-in robes and ceiling fans. Bedroom 2, which is located adjacent to the entry features timber-look flooring making it an ideal solution for a home-based office. The main bathroom offers a shower, bath and vanity and is complimented by a separate, adjacent toilet. The internal laundry is located in the garage with direct external access to the clothesline. Security screens are included throughout, and window treatments are featured throughout the property.

Tiles and timber look flooring feature in the main living areas with the comfort of carpet underfoot in the bedrooms. When it comes time for some down time, the undercover alfresco area provides a great space for outdoor entertaining and relaxation. This spacious area has adequate room to accommodate dining as well as casual seating. A remote-control double lock up garage completes the amenities and being fully fenced the property offers a safe and secure environment for your children to play in. Located at 50 Bedivere Drive, Ormeau is a must-see home on your inspection list so don't miss the opportunity to view this home. Vacant, and available for inspection now at a weekly rent of \$730 per week. Features include:

- 4 bedrooms, large open plan dining and living area with a separate lounge
- Large undercover alfresco area
- Spacious master bedroom with ensuite plus walk-in robe
- Remaining bedrooms feature built-in robes and ceiling fans
- Large central kitchen featuring 600mm ceramic cooktop and wall mount oven, new dishwasher, pantry and microwave space
- Split air conditioning to main living area
- Main bathroom with bath, shower and vanity plus separate toilet
- Internal laundry located in the garage with direct external access
- Window treatments throughout
- Timber look laminate flooring in lounge and bedroom 2 with tiles elsewhere in the central living area and carpet in bedrooms
- Security screens throughout
- Remote double lock-up garage with walk-through access to the dwelling
- Fully fenced

Conveniently located:

- 3.9 km to Ormeau State School (Primary within catchment)
- 2.8 km to Ormeau Woods State High School (Secondary within catchment)
- 1.3 km to Livingstone Christian College (Prep - 12)
- 1.5 km to Toogoolawa School (Special Non-Government School)
- 850 m to Ormeau Village Shopping Centre & Coles
- km to M1 North on ramp
- 3.1 km to M1 South on ramp
- 4.5 km to Ormeau Train Station
- 6.7 km to Bunnings Pimpama

Contact Michelle Osmond or Zoe Ray your trusted Ormeau leasing specialists at JMO Property Group today on (07) 5517 5282 or michelle@jmoproperty.com.au or zoe@jmoproperty.com.au to register your interest.

Disclaimer: JMO Property Group has obtained the information presented herein from a variety of sources we believe to be reliable. The accuracy of this information, however, cannot be guaranteed by JMO Property Group and all parties should make their own enquiries to verify this information.