

**50 Wattle Avenue, North St Marys, NSW 2760**



**Sold House**

Saturday, 16 September 2023

50 Wattle Avenue, North St Marys, NSW 2760

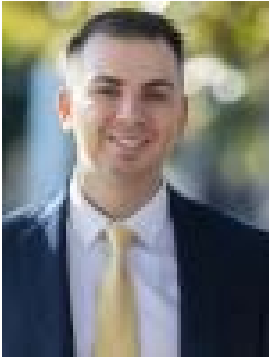
**Bedrooms: 3**

**Bathrooms: 2**

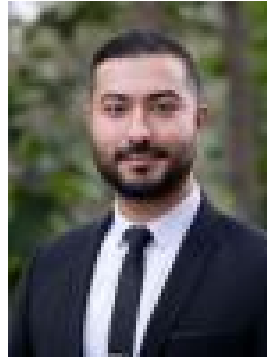
**Parkings: 2**

**Area: 746 m2**

**Type: House**



Peter Diamantidis  
0296234033



Omid Ahmadshahie  
0296234033

**\$815,000**

We are pleased to present 50 Wattle Avenue, North St Marys brought to you by award winning agent Peter Diamantidis. Positioned in prime location, this 3 bedroom brick house is close to all amenities such as Queen Street shops, St Marys Village, schools and approximately 1.4km to St Marys Train Station which is soon to be a Metro stop for the new Airport currently under construction. Positioned on the high side of the street, this property complies to build a duplex or granny flat STCA. What we like about this property:- 3 spacious bedrooms with built in robes- Spacious eat in style kitchen with breakfast bar and ample cupboard space- Teenage retreat- Spacious lounge and separate dining area - Neat & tidy bathrooms with separate bath and shower- Side access to yard - Huge backyard + garden shed- 746sqm of land with a wide frontage For further information, please contact Peter Diamantidis 0404 051 702 or Jerom Palackalody 0481 287 515. Disclaimer: The above information has been gathered from sources that we believe are reliable. However, we cannot guarantee the accuracy of this information and nor do we accept responsibility for its accuracy. Any interested parties should rely on their own enquiries and judgment to determine the accuracy of this information for their own purposes. Images are for illustrative and design purposes only and do not represent the final product or finishes.