

5006 Casa Estate, Rouse Hill, NSW 2155



Sold House

Thursday, 21 March 2024

5006 Casa Estate, Rouse Hill, NSW 2155

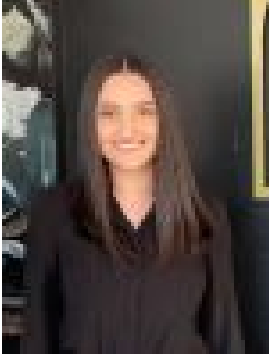
Bedrooms: 4

Bathrooms: 3

Parkings: 2

Area: 400 m2

Type: House



Bianca Calarco
0297572300

\$1,732,900

Fowler Homes Aspire Ultra Inclusions 3 x Promotions provided (see your consultant for full details) Reverse Cycle Ducted Air-Conditioning 2740mm High Ceilings to Ground Floor & 2600mm to First Floor 2340mm high doors to Ground floor - Front door up to 1220mm wide (subject to design) 600mm x 600mm Porcelain tiles to open living areas including under stair storage (subject to design) Selected from Fowler Homes builders range Tiles to porch and alfresco areas. Selected from Fowler Homes builders range Carpet to balance of the home 40 x LED downlights 40mm Silestone Kitchen Benchtop & Vanities 40mm Silestone Waterfall Edge/s to Island Bench Silestone Splashback to kitchen Polytec laminate Kitchen cupboards from Woodmatt range. Overhead kitchen cupboards with bulkheads 900mm appliances including dishwasher and built-in microwave Floor to ceiling tiling to Bathroom & Ensuite Frameless shower screens to all showers including tiled niche Double glazed windows and sliding doors throughout home Ness D8 alarm system with three PIR sensors, two sirens and one LED keypad Mirror Sliding Doors to Wardrobes with white melamine shelf & chrome hanging rail Colour on concrete driveway and Landscaping to front yard Fixed Price Site Costs Promotion (Refer to promotional material) and much much more. See your Consultant for full details of luxury inclusions