

501/563 Pacific Highway, St Leonards, NSW 2065



Sold Apartment

Friday, 3 November 2023

501/563 Pacific Highway, St Leonards, NSW 2065

Bedrooms: 2

Bathrooms: 1

Parkings: 1

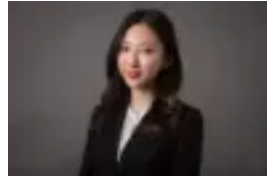
Area: 73 m2

Type: Apartment



Jeffrey Li

0298848228



Reika Morikawa

0298848228

Contact agent

This luxury appointed boutique development features luxurious appointments and an unsurpassed level of refined craftsmanship. Positioned in the heart of St Leonards, just 5km north of Sydney's CBD, relish in the prestigious setting amongst some of the finest lifestyle amenities and Crows Nest where endless dining options, bars and cafs line the streets all within a brief stroll from home. Culminating in a spectacular rooftop terrace immersed in sweeping vistas across Woodford Bay and beyond, it sits just 70m from the proposed Crows Nest metro rail service, 350m to St Leonards station and close to village shops and schools.- Boutique building consisting of only 17 apartments- 5 min walk to St Leonards train station- 1 min walk to new Crows Nest Metro Station- Ground floor retail- Secure building with security access- Storage cage- Internal laundry