

501/6-8 Eastern Beach Road, Geelong, Vic 3220



Sold Apartment

Thursday, 16 November 2023

501/6-8 Eastern Beach Road, Geelong, Vic 3220

Bedrooms: 4

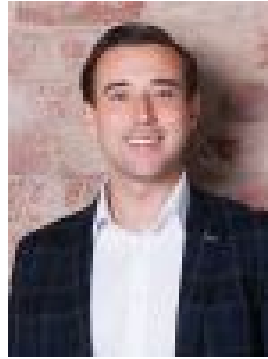
Bathrooms: 3

Parkings: 4

Type: Apartment



Jim Cross
0352232040



Brock Buchanan
0409899945

Contact agent

Boasting panoramic views over the lush garden terrace to the sparkling waters of Corio Bay and the iconic Cunningham Pier, this spectacular four-bedroom apartment in the exclusive 'Edgewater' residence epitomises luxury waterfront living. Offering an abundance of living and entertainment excellence, there is ample room for the family and large gatherings with friends for those special occasions. Designed by revered architect Fender Katsalidis, floor-to-ceiling windows and multiple private balconies capture breathtaking views throughout the accommodation and living areas. Access to communal facilities includes an indoor swimming pool, a fully-equipped gymnasium and a steam room. The expansive rooftop garden incorporates shared BBQ facilities and seating and also offers its own water vistas. Vehicle accommodation is ideal with four separate secure car parks catering for family, visitors or that classic Sunday driven sports car. Ideally positioned across from Steampacket Gardens, this location promises an unparalleled lifestyle. Enjoy walking paths around the bay, through to Eastern Beach and the Botanic Gardens. A selection of Geelong's renowned restaurants, bars and cafes are only moments away. Nearby to the Royal Geelong Yacht Club. Close proximity to CBD, Deakin University and Ferry Terminal. - Luxe interiors are imbued with high-end details throughout- Designer kitchen with stone benchtops and Miele appliances - Generous master bed with ensuite, balcony and built-in robes- A further three beds, two with ensuites and built-in robes- North-facing balcony with bay views over Steampacket Gardens- Spacious open plan living zone adjoins a second sitting area- Central home office, separate laundry and a powder room- Ducted heating, refrigerated cooling, double glazing- Secure parking for four vehicles, intercom and lift access