

505 Swans Road, Darley, Vic 3340



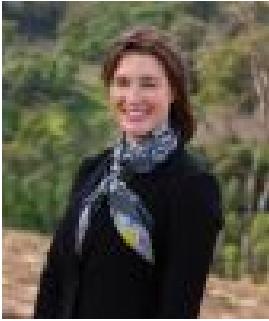
Livestock For Sale

Friday, 5 April 2024

505 Swans Road, Darley, Vic 3340

Area: 26 m2

Type: Livestock



Erin Cubley
0403599477



Belinda Lewin
0402588987

\$1,200,000 - \$1,250,000

Nestled in the rolling hills of Darley, this captivating 65 acre property is a true gem offering a unique blend of privacy and convenience. Surrounded by breath taking views and bordering the Lerderderg State Park's picturesque walking trails, it provides an idyllic setting for those seeking a tranquil escape. Boasting high quality fencing and ready for immediate agricultural use, this versatile land is currently home to sheep and has previously supported cattle, showcasing it's suitability for various livestock ventures. With the added advantage of the serene Korkuperrimul Creek that runs at the rear boundary and a large dam, the property not only offers agricultural potential but also enhances it's natural beauty and biodiversity. In addition to it's abundant natural features and convenient location, this property offers the added benefit of having power readily available at the front, providing ease of access for future development or construction projects. Despite its secluded location, this property is just a mere 10-minute drive from local amenities such as the IGA, primary schools, public transport, and freeways, making it a rare find for those who desire the perfect balance between rural living and urban convenience. Your travel time will amaze you! Being only an hour to the CBD, 50 minutes to Geelong and 40 minutes to Ballarat. The options are endless, call today for more information because this won't last long.