

507/537 Princes Highway, Rockdale, NSW 2216



Apartment For Rent

Friday, 19 April 2024

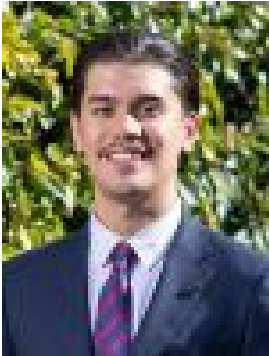
507/537 Princes Highway, Rockdale, NSW 2216

Bedrooms: 2

Bathrooms: 2

Parkings: 1

Type: Apartment



Jonathon Voisin
0498012853



Stephanie Mastronardo
0419429598

\$820 pw

Luxury apartment offers modern urban living conveniently located just 20 minutes south of Sydney CBD, Luminary is only a 3 minute stroll to Rockdale train station and moments to Rockdale Plaza.- Two generous bedrooms both with mirrored built-ins- Luxe kitchen with stone bench tops and gas appliances- Two well appointed luxury bathrooms, ensuite to main- Ducted air conditioning, discrete internal laundry, intercom- Undercover parking space with level lift access plus storage- Peaceful communal courtyard, district views, covered balcony- Conveniently located only a 3 minute walk to train station