

**507/7 Half St, Wentworth Point, NSW 2127**



**Apartment For Sale**

Friday, 2 February 2024

507/7 Half St, Wentworth Point, NSW 2127

**Bedrooms: 1**

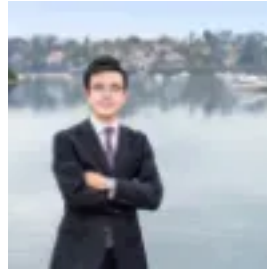
**Bathrooms: 1**

**Parkings: 1**

**Type: Apartment**



Angell Yang  
0434259336



Kalaney Che  
0422273658

## **Just Listed ! Contact Agent**

This amazing Sirius waterfront building situated along the Bennelong Footbridge, with park along the waterfront, developed by the award-winning developer Billbergia. Low density block with peaceful and private lifestyle. Its within walking distance to Rhodes train station, bus stops and Rhodes Central shopping centre, close to all amenities. Marina square shopping Centre, Olympic Park ferry wharf and New Wentworth point high school are just around the corner. Features include:- Northeast Aspect and overlooking the water and internal garden, leafy and good airflow- One bedroom with built-in robe and direct access to enclosed wintergarden- Air-conditioned lounge room opening up to the large winter garden with waterview and garden view - Modern gourmet kitchen with glass splash back, gas cooktop, stainless steel appliances, completed with an elegant kitchen island - Bathroom tiled to ceiling and separated internal laundry- Low density security building with intercom and lift access- Allocated car space and storage cage in the basement- Total area 87sqm- Low strata maintenance, low rise building, good privacy- Free Baylink shuttlebus between Wentworth Point and Rhodes train station- Easy access to the nearby walking tracks, bike tracks, parks and cafesDon't wait to call our friendly team now for more information.Disclaimer: All information contained herein is gathered from sources we believe to be reliable; we cannot guarantee accuracy. Any interested parties should rely on their own enquiries.