

508/100 Bowen Terrace, Fortitude Valley, Qld 4006



Apartment For Rent

Thursday, 9 May 2024

508/100 Bowen Terrace, Fortitude Valley, Qld 4006

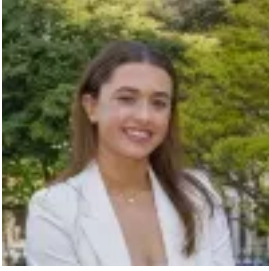
Bedrooms: 2

Bathrooms: 2

Parkings: 1

Area: 97 m2

Type: Apartment



Ella Butler

0732311000

\$750 per week

****WATER INCLUDED IN RENT PRICE****The lift to the Howard Smith Wharves is at your door, as is the beautiful riverwalk to New Farm Park and the Brisbane Powerhouse. If you are looking for an in-demand location together with river and city views, then look no further. This two bedroom apartment located in the Petrie Point apartments offers resort style living inclusive of a pool, gym and spa. Abundantly filled with light and subtle breezes throughout with an open plan living design allows for the comfort of lifestyle that this apartment offers. - Property has just been painted - 5th Floor - Two large bedrooms, main with ensuite and walk-in robe - Functional open living space with Great sized balcony taking in some of the most incredible views Brisbane has to offer - Spacious kitchen with gas cooking and dishwasher, lots of storage!! - Open plan airconditioned living and dining room - Internal laundry - Convenient location on the fringe of New Farm and CBD - Resort style pool, relaxing gardens, conference room and library - Underground car parking, secure complex with intercom - Located at the top of Howard Smith Wharves and river walk!!