

**50A Archerfield Drive, Shell Cove, NSW 2529**



**Sold House**

Thursday, 16 November 2023

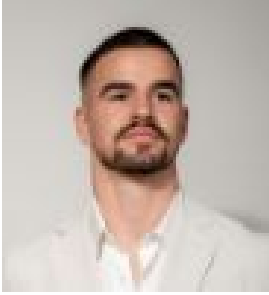
50A Archerfield Drive, Shell Cove, NSW 2529

**Bedrooms: 3**

**Bathrooms: 2**

**Parkings: 1**

**Type: House**



Cooper Askew

0484094814

**\$950,000**

Immaculately presented with quality fittings and finishes throughout is this near new contemporary duplex home offering a practical floor plan to suit the modern family or investor. The floorplan offers 3 bedrooms and 2 spacious bathrooms, an open plan living area which seamlessly flows into the outdoor area, perfect for entertaining guests and family all year round. The kitchen is stylish and sleek with stone benchtops and top quality appliances. Featuring a single car garage and plenty of storage throughout. This residence offers the opportunity to secure a significant home in a highly sought after street in Shell Cove capturing uninterrupted views of the links Shell Cove Golf course and close proximity to the newly approved Class 1 Illawarra hospital, Walking distance to local railway station and Schools. Very few properties tick all the boxes in terms of location, character and quality. Within walking distance to the marina precinct, local beaches, restaurants and cafes. Be the envy of all and only 1.5hrs from Sydney CBD and just a short drive to Shellharbour City Centre, Stocklands, shops, Cinemas and Restaurants. Contact Cooper Askew on 0484 094 814 for further information.