

51/16 Crescent Avenue, Mermaid Beach, Qld 4218



Sold Unit

Saturday, 17 February 2024

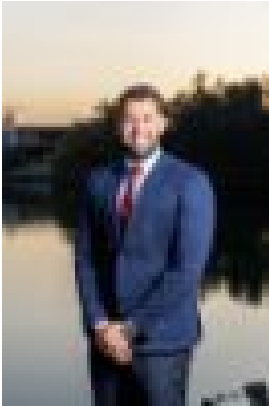
51/16 Crescent Avenue, Mermaid Beach, Qld 4218

Bedrooms: 2

Bathrooms: 2

Parkings: 1

Type: Unit



Ricky Agent
0755922706

\$770,000

If you have been wanting an investment property or a meticulously renovated two-bedroom apartment at Diamond Cove Resort in the coveted Mermaid Beach, you need to come and see this. Nestled within a secure, gated complex, this apartment transcends the ordinary, providing a perpetual holiday get away. Conveniently situated near the Light Rail, Pacific Fair, Star Casino, Nobby Beach village, and an array of boutiques, cafes, and top-notch restaurants, it ensures a life of ease. Did we mention how close beaches are? Step into a light-filled haven with a renovation that extends from the kitchen to the flooring. Enjoy the comfort of two bedrooms and two bathrooms, the master bedroom comes complete with an ensuite and walk-in wardrobe. The kitchen is a culinary delight, showcasing stone benchtops, soft-closing cabinetry, and high-quality appliances. Practical features include a 2-way bathroom, internal laundry, secure basement parking for residents, and security intercom access. Designed for year-round comfort, the apartment is air-conditioned and opens up to an exclusive poolside terrace. Additional highlights include a 30m heated lagoon-style swimming pool, spa and BBQ facilities, perfect to enjoy on your own or entertain guests. Allow us to invite you to experience a new level of luxury. Seize the opportunity to make this haven your own, and embrace a lifestyle close to the golden sands of Mermaid Beach. Disclaimer: We have in preparing this information used our best endeavours to ensure that the information contained herein is true and accurate, but accept no responsibility and disclaim all liability in respect of any errors, omissions, inaccuracies or misstatements that may occur. Prospective purchasers should make their own enquiries to verify the information contained herein. * denotes approximate measurements.