

51 Dahlia Crescent, Donnybrook, Vic 3064

Sold Residential Land

Wednesday, 6 March 2024



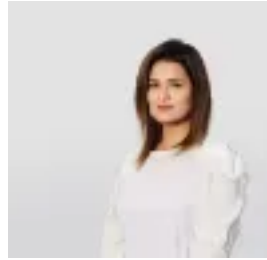
51 Dahlia Crescent, Donnybrook, Vic 3064

Area: 448 m2

Type: Residential Land



Love Sharma
0430534802



Samaira Ahuja
0384689900

Contact agent

This perfect 448 sqm – 14m x 32m) situated in popular location in Mickleham is ready to build on. Design your dream home with your choice of plan and upgrades. Conveniently Close Distance to Local Amenities Such As: • Highland Shopping Centre & Senol Craigieburn • Newbury Primary School & Mount Ridley College • Hume Anglican Grammar & Mother Teresa Catholic Primary School • Walking distance to Newbury Childcare & Community centre • Walking distance to Hockey Club, Basketball Court, Skatepark • Walking distance to Upcoming Craigieburn Village Shopping • Craigieburn Library & Highgate Recreation Stadium • Easy Access to Hume Freeway and Public Transport • Splash Aqua Park and Leisure Centre • Craigieburn Central Shopping Centre • Hume Tennis & Community Centre • Walking distance to Bus Station • Walking distance to local Parks • Craigieburn Train Station • And all the local amenities. Come and build your DREAM HOME. please call Love Sharma 0430 534 802 to find out more! NOTE: Link for Due Diligence Checklist: <http://www.consumer.vic.gov.au/duediligencechecklist> Note: All Dimensions, Sizes n Layout are approximately. The producer or agent cannot be held responsible for any errors, omissions or misstatements