

**51 St James Drive, Baldivis, WA 6171**



**Sold House**

Tuesday, 16 January 2024

51 St James Drive, Baldivis, WA 6171

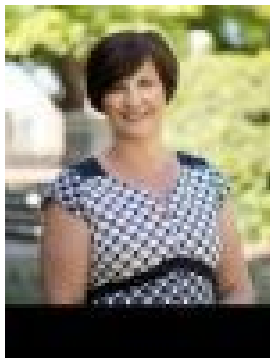
**Bedrooms: 4**

**Bathrooms: 2**

**Parkings: 2**

**Area: 525 m2**

**Type: House**



**ELAINE LOFTHOUSE**

0421929860

**\$780,000**

RAY WHITE HAS PLEASURE INTRODUCING TO THE MARKET THIS IMPRESSIVE 4X2. LOCATED IN AN ELEVATED POSITION WITHIN THE POPULAR Highbury Estate Precinct of Baldivis, with stunning, unobstructed views overlooking parkland and towards the hills. The moment you enter through the double doors and walk into the warm and welcoming hallway, you will experience the grandeur and elegance of this special property. The quality blackbutt flooring meanders throughout the main living areas and once you walk into the main family/kitchen area you will be impressed by the extremely high standard and specifications on display. Your dream master bedroom is situated at the front of the house and can compete with any 5 star hotel suite. There is a vast walk in robe and a stylish en suite, it exudes the feeling of luxury and relaxation with amazing views across to the parkland. The modern and sleek kitchen will dazzle due to the extensive stone workbench space, large 900mm appliances, modern overhead lighting and the abundance of high and low rise cupboards and drawers. The sense of space and luxury is enhanced by high ceilings and tasteful décor throughout. The private outside sanctuary showcases perfect seclusion and privacy with low maintenance, attractive lush garden beds, plants and shrubs. With the addition of powered café blinds this lovely area can be utilised all year round. This is a fabulous property and a perfect example of excellent location, gorgeous views, low maintenance and boasting modern and contemporary, quality specification finishes. The property is ready to move in with no work needed and I would urge you to view this coming weekend or risk missing out. I look forward to meeting you soon