

51 Womurrung Avenue, Castle Hill, NSW 2154

Residential Land For Sale

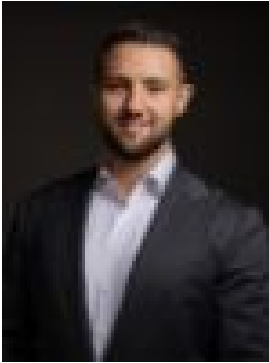
Friday, 29 December 2023

MANOR

51 Womurrung Avenue, Castle Hill, NSW 2154

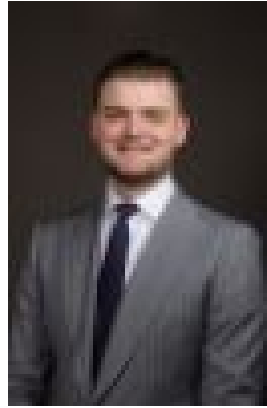
Area: 703 m2

Type: Residential Land



Zach Eadie

0296395833



Lachlan Whalen

0296395833

Contact Agent

Introducing an exceptional parcel of land, situated atop one of Castle Hill's highest points at 51 Womurrung Avenue. Nestled in a prime estate on an expansive 703sqm (approximately) block, this property presents an unparalleled opportunity to craft and construct your ideal home. Secluded in a cul-de-sac, the location affords stunning views of the Blue Mountains and is surrounded by some of Castle Hill's most opulent residences. Strategically positioned, the property offers proximity to Oakhill College, Heritage Park, and convenient access to Castle Towers & Metro, as well as Castle Hill Public & High Schools.

Key Property Features: 703sqm of vacant land with an 22m frontage Elevated position and a rectangular shape Prestigious estate with luxury residences in the vicinity Sweeping district views extending towards the Blue Mountains

Key Location Features: Walking distance to Oakhill College 400m (5-minute walk) to Castle Hill Heritage Park Reserve 2.2km (4-minute drive) to Castle Towers, Metro, and Bus Station 2.9km (6-minute drive) to Castle Hill Public School 3.8km (7-minute drive) to Castle Hill High School

Disclaimer: The above information has been gathered from sources that we believe are reliable. However, we cannot guarantee the accuracy of this information and nor do we accept responsibility for its accuracy. Any interested parties should rely on their own enquiries and judgment to determine the accuracy of this information for their own purposes. Images are for illustrative and design purposes only and do not represent the final product or finishes.