

**52 Armadale Drive, Narre Warren, Vic 3805**



**House For Sale**

Wednesday, 17 January 2024

52 Armadale Drive, Narre Warren, Vic 3805

**Bedrooms: 3**

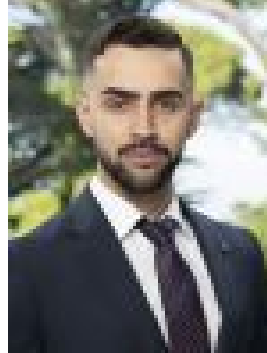
**Bathrooms: 2**

**Parkings: 2**

**Type: House**



Nicola Parreira  
0387946100



Seb JeanPierre  
0387946100

**\$700,000 - \$770,000**

Entering this charming residence, you'll immediately appreciate the thoughtful features that make this house a home. As you step through the entrance, the eye-catching parquet floors immediately greet you, infusing the interior with a distinctive touch of character. The first living area, a sunken lounge, unfolds gracefully, offering an elegant and inviting space. Whether you're entertaining guests or seeking a retreat after a long day, this sunken lounge sets the stage for relaxation and stylish socialising. The layout ensures a seamless flow between the kitchen and the surrounding living spaces, creating an inviting atmosphere, making it easy to prepare meals, engage in conversations with guests in the adjacent living areas, making every gathering a shared experience. This residence features a total of three bedrooms, the master bedroom, complete with a walk-in robe and ensuite, situated at the front of the home. The two additional bedrooms with BIR are positioned towards the rear, accompanied by the main bathroom and a separate toilet to cater to the needs of both bedrooms. Step outside to a huge outdoor area, neatly landscaped yard which further enhances the overall appeal of this property. Within close proximity to Fleetwood Primary, Narre Warren train station and surrounded by greenery, 52 Armadale Road enjoys proximity to Ray Bastin Reserve, Norfolk Reserve, Wesley Drive Reserve providing convenient access to outdoor recreation and nature. Other features include: split system air conditioning, ducted heating, 6.6kw solar panels, alarm system and more! Don't miss the opportunity to make this house your home.