

**52 Felix Way, Tarneit, Vic 3029**



**Sold House**

Friday, 8 September 2023

52 Felix Way, Tarneit, Vic 3029

**Bedrooms: 5**

**Bathrooms: 2**

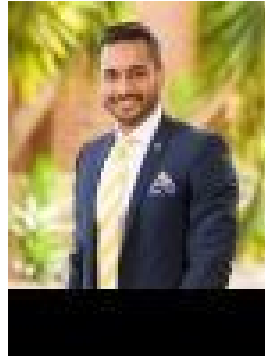
**Parkings: 2**

**Area: 450 m2**

**Type: House**



Jagjit Singh  
0430273730



Mark Srivastava  
0425400600

**\$706,000**

Ray White Truganina proudly introduces this exquisite residence, nestled within the highly sought-after 'The Heartlands Estate' in Tarneit. Situated on an approximately 450 Sqm block of land, this impeccable house offers the perfect blend of comfort and contemporary living. With 5 bedrooms in total, including a master bedroom with an ensuite, ultra-spacious walk-in robe, and double vanity, extended shower and niche as well as 3 bedrooms with built-in robes, serviced by a central bathroom and a separate toilet, this property caters to families of all sizes. The house boasts a tasteful combination of carpets in the bedrooms and elegant tiles throughout the rest of the home. The modern kitchen is a standout feature, equipped with a 900mm cooktop, glass splashback, stainless steel appliances (including a dishwasher, oven, and rangehood), a 20mm stone benchtop, and a convenient walk-in pantry. The kitchen also boasts well-placed feature lighting, adding to the overall aesthetic. The open-plan design seamlessly connects the dining area and living area, creating an inviting and spacious atmosphere for both entertaining guests and relaxing with family. For outdoor gatherings, the covered alfresco area provides the perfect spot, overlooking the fully artificial grass outdoor space. Security and peace of mind are assured with the inclusion of security cameras, offering added protection for you and your loved ones. The property also features a spacious laundry with ample storage and high ceilings throughout the house, contributing to a sense of openness and airiness. Conveniently located, this appealing home is in close proximity to various amenities, including, Tarneit Rise Primary School, St John the Apostle School, Tarneit Garden Shopping Centre, Riversdale Shopping Centre, Childcare centres, Serene parklands, and Public transport, Tarneit Railway Station etc. Main Features: • Grand Master bedroom with ensuite with double vanity, extended shower niche and a large walk-in robe • Three bedrooms have built in robes • A separate living with built in home theatre • Open plan family/meals area with adjoining kitchen, fitted with ample cupboard and bench space. • 20mm Stone benchtop, 900mm cooktop with oven • Dishwasher, stainless steel appliances • Ducted heating and cooling • High Ceilings • Downlights throughout the house • Security Cameras • Alarm System • Solar Panels • Decked Alfresco with fully sealed patio blinds. • Remote control double garage with internal access • Fully landscaped front yard and back yard If you are seeking a mixture of convenience, affordability and lifestyle, then look no further! This appealing abode can be yours. INSPECT before it's GONE! Incredible Family Homes are hard to find, be quick to book your inspection or discuss this home further Call JAGJIT on 0430273730 or Mark on 0425400600. Photo ID required for all Inspections. DISCLAIMER: All stated dimensions are approximate only. Particulars given are for general information only and do not constitute any representation on the part of the vendor or agent. Please see the below link for an up-to-date copy of the Due Diligence Checklist: <http://www.consumer.vic.gov.au/duediligencechecklist>