

52 Gillcrest Drive, Bega, NSW 2550

Acreage For Sale

Friday, 10 May 2024

52 Gillcrest Drive, Bega, NSW 2550

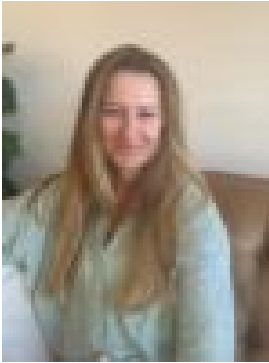
Bedrooms: 5

Bathrooms: 3

Parkings: 5

Area: 4 m2

Type: Acreage



Natalie Scott

NEW PRICE RANGE \$1,350,000 - \$1,450,000

Treat yourself to the lifestyle so many crave with this gorgeous home nestled within a private pocket of Buckajo, only 10 minutes to Bega. This well established property spans 10.5 acres and is surrounded by an abundance of birdlife and wildlife in a tranquil river side setting. The perfect natural haven for peaceful small acreage living where you can immerse yourself in nature and let the kids explore, away from the hustle and bustle of town. Featuring a beautifully designed home offering a front seat view over the perfectly manicured lawns & luscious landscaped gardens with a Bega River backdrop. The inviting abundance of space makes this home functional and relaxed for family living all year round. From the above ground pool and spa, raked ceilings with exposed beams and open plan living, this property offers only the most alluring lifestyle. With plenty of room to entertain and a dream location, this is a rare opportunity not to be missed.

- Tranquil location tucked away in the quiet outskirts of Bega
- Spacious east facing frontyard with a thriving garden and leafy outlook
- Double garage with high top roller doors + self contained studio space at the rear of garage
- NBN and satellite internet
- Serviced by local school buses
- Host guests on the covered rear patio or relish hours of fun in the pool and spa
- Covered veranda and patio for easy dining alfresco
- Attached single carport
- Luscious green lawns front and back, perfect for entertaining and kids play
- 7.2 kw solar system with solar HWS and boosted