

52 Harslett Cres, Beverley Park, NSW 2217



House For Sale

Friday, 31 May 2024

52 Harslett Cres, Beverley Park, NSW 2217

Bedrooms: 3

Bathrooms: 1

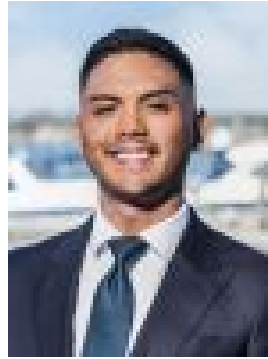
Parkings: 2

Area: 657 m2

Type: House



Trent Tarbey
0295293633



Josh Vela
0295293633

Guide \$2,000,000

Original yet impeccably kept, this charming single level home provides a full brick base on 657sqm for families and visionary buyers to renovate (STCA). Its sought-after location is a stroll to Beverley Park Golf Club, Hurstville buses, shops and eateries. Brimming with potential- L-shaped lounge and dining room flows to casual living area- Refresh with cosmetic updates, transform with full renovation- Sunlit established gardens create a private outdoor oasis- Timber finished kitchen fitted with plenty of storage space- Three large bedrooms, two appointed with built-in wardrobes- Immaculately kept bathroom features separate bath and shower- Ducted air conditioning, high ceilings, fans, large laundry- Side driveway access to garage offers ample off street parking- Additional garage, workshop or storage located underhouse- Placed within the catchment of Carlton South Public School