

**52 Rocklea Road, Teesdale, Vic 3328**



**House For Sale**

Saturday, 20 January 2024

52 Rocklea Road, Teesdale, Vic 3328

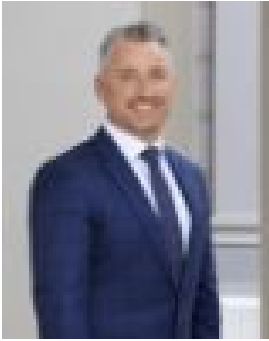
**Bedrooms: 4**

**Bathrooms: 2**

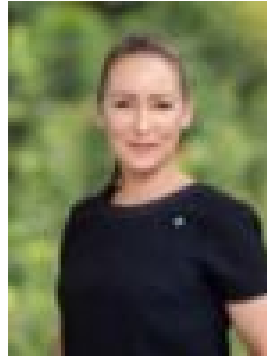
**Parkings: 4**

**Area: 4011 m2**

**Type: House**



Marcus Falconer  
0417376025



Rena Maniatakis Maniatakis  
0423037828

**\$899,000 - \$969,000**

Escape hectic city life at this semi-rural property in the growing township of Teesdale, less than a 30-minute drive to Geelong. The one-acre (4010sq m approx.) property is just the right size for your family to thrive without adding too many demands to your weekend schedule. With four bedrooms, multiple living zones, an alfresco terrace, dedicated home office and open space for kids to run free, this is an ideal family home or rural getaway. The substantial allotment also offers space to park and store multiple vehicles, making it a find for tradies or caravan/boat owners. The home's lifestyle spaces are anchored by an open-plan family, dining and kitchen hub, stepping out to the undercover alfresco area for year-round entertaining. A formal lounge or theatre room ensures entertainment options for the whole family, while an extra living space is ideal as a study or retreat. The kitchen boasts an island bench with breakfast bar, stone countertops, stainless-steel appliances, banks of drawers for storage and a butler's pantry. The master bedroom suite includes a walk-in robe and ensuite with twin vanities and dual shower, while three further bedrooms with built-in robes are serviced by a central bathroom with shower and separate bath. The separate office enjoys its own entry and storage, suited to a home business or creative studio. It also could double as a teen retreat or rumpus room. Other highlights include plenty of natural light, separate laundry, tiles in high-traffic areas and split-system heating and cooling in the main living zone and home office. The property is a few minutes' drive to Teesdale Primary School and Bannockburn P-12 College, with Kardinia International College and Covenant College on Geelong's northern fringe offering private school options. Teesdale offers a general store, family medical centre and sport at Don Wallace Recreation Reserve. For supermarket shopping, head to Bannockburn, while local nature reserves cater for leisure pursuits. It's also a relaxed drive to Geelong's CBD or the M1 for commuters to Melbourne.