

521/18 Epping Park Drive, Epping, NSW 2121



Apartment For Sale

Wednesday, 15 May 2024

521/18 Epping Park Drive, Epping, NSW 2121

Bedrooms: 2

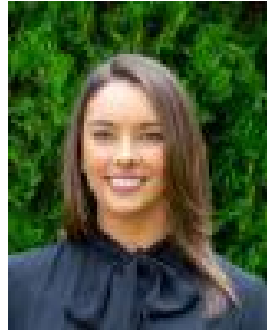
Bathrooms: 2

Parkings: 2

Type: Apartment



Allison Mifsud
0405138408



Danielle Jenkins
0459341200

\$780,000-\$830,000

Enjoy resort style living in a tranquil and peaceful location while amongst a family friendly community. With a unique top floor position offering extra ceiling height and an oversized entertaining terrace.* Two double bedrooms both with built in robes + study nook* Open plan gas kitchen with dishwasher and stone island bench* Light filled lounge/dining leads to the entertaining terrace* Ducted air conditioning, internal laundry* Double side by side security car spaces + storage* Indoor pool, spa, sauna, gym + tennis court* Short walk to the new Ngarala Primary school* Catchment for Cheltenham Girls & Marsden High* Convenient to Epping and Eastwood railway + shopsApprox rates: Strata: \$1407 pqCouncil: \$191.10 pqWater: \$178.42 pqApprox size: Total: 125sqm (Int 93sqm Car 30sqmStorage 2sqm)