

5262 Midland Highway, Elaine, Vic 3334

Sold Acreage

Thursday, 15 February 2024

5262 Midland Highway, Elaine, Vic 3334

Bedrooms: 2

Bathrooms: 1

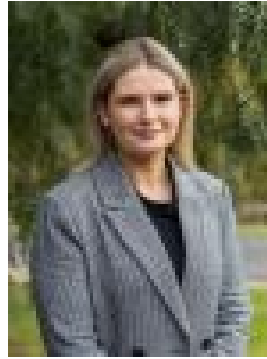
Parkings: 6

Area: 4082 m2

Type: Acreage



Seka Powell
0409235245



Demi Lynch
0499550114

Contact agent

A perfect opportunity for first home buyers looking for an expansive block with shedding, situated in the lovely Township of Elaine just 45 minutes to Geelong and 30 from Ballarat. Or if you choose, sell off one half-acre allotment and enjoy life just that little more. Although the address is the Midland Hwy, this property is situated on a deep service road, sitting within walking distance to the local pub, general store, and other amenities. This cute little cottage is picture perfect, with stunning leadlight features and high ceilings, and has been lovingly updated with considered choices and restored finishes. It includes a new kitchen with upright stove, beautiful, polished timber floors, spilt system and stylish cabinetry that harmonise with the heritage elements. Opposite is a carpeted living room with a double open entry way. To the front of the home are 2 spacious bedrooms, one with polished floors while the other is carpeted and includes combustion heating for comfort. A heatbank sits further toward the kitchen/living areas. To the back of the home is a study/retreat room or children's living area with polished concrete floors and a lovely lead light feature. Positioned opposite is a new spacious bathroom and double sliding glass doors lead outdoors. Outside you'll just want to sit under the northerly veranda, relax and enjoy your vista over the dam and beyond. A neat yard surrounding the cottage will delight and a large concreted and powered 4-car Colorbond shed with 3 roller doors (one to the side) is a joy for any tradie or tinkerer. The property is made up of 2 half-acre parcels of land under one title, with the cottage positioned on one. This leaves the other vacant and gives you plenty of scope for extending the home, perhaps allowing room for a horse or simply space to be enjoyed as you choose. The property has plenty of tank water, includes a dam and has public transport close to your doorstep - a terrific and eye-catching investment! This property is uniquely special and will put you under its spell! Call now to inspect.