

53 Jamboree Avenue, Leppington, NSW 2179



Sold House

Friday, 25 August 2023

53 Jamboree Avenue, Leppington, NSW 2179

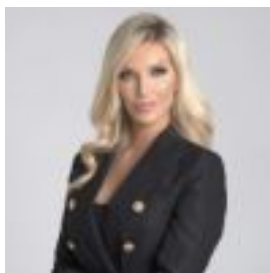
Bedrooms: 4

Bathrooms: 2

Parkings: 2

Area: 450 m2

Type: House



Ivana Robinson

0296082222

\$1,180,000

Situated on a generous 450sqm block, this quality built home is located in the sought-after neighbourhood of Leppington. Warm and welcoming, this 4 bedroom plus theatre room, 2 bathroom house is sure to create a haven for your loved ones. Appealing to families or investors, this home is sure to tick all the boxes. Built to perfection, this well thought out floor plan has been spaciouly designed to accommodate the entire family with comfort in mind. With ensuite and his and hers walk-in wardrobes to the main bedroom and built-in wardrobes to each bedroom, ducted air conditioning, plus the added peace of mind of an alarm system fitted throughout the home, the opportunity to own this desirable family home awaits. Conveniently located in close proximity to Willowdale Park, Coles, Leppington Station, bus stops, a short drive to local shopping centres, the M5 and M7 motorways, the upcoming Western Sydney airport, and a choice of schools in proximity, you will be immersed by the surrounding community of Leppington, and all that it has to offer. Features include: - Situated on 450sqm block- Appealing to investors, currently leased to great tenants - 4 bedrooms + theatre room- 2 bathrooms- Built in wardrobes to 3 bedrooms- His and hers walk in wardrobes to main bedroom- Ducted air conditioning- Flyscreens to windows- Downlights throughout- Open plan kitchen, dining and living area- Modern kitchen equipped with stone island benchtop, gas cooking, and stainless steel appliances- Outdoor alfresco with concrete slab, tiles, outdoor power, gas connection and downlights- Fully fenced and landscaped with external spotlights- Double automatic lockup garage with internal access- Under 10 min drive to Leppington Station- Under 400m walk to nearest bus stop- Leppington Anglican College- Leppington Public School- Denham Court Public School- Childcare centresDisclaimer: All information contained herein is gathered for sources we believe reliable. We have no reason to doubt its accuracy, however we cannot guarantee it. All interested parties should make and rely on their own enquiries.