

53 Madden Road, Bannockburn, Vic 3331



House For Sale

Wednesday, 12 June 2024

53 Madden Road, Bannockburn, Vic 3331

Bedrooms: 3

Bathrooms: 1

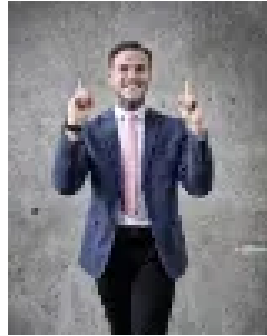
Parkings: 8

Area: 4 m2

Type: House



Natasha Boreland
0403577721



Matthew Ward
0352808434

\$1,290,000 - \$1,350,000

Indulge in the tranquility of a rural lifestyle with this stunning property! "Rivendell" is set on a sprawling 10.3 acres, just moments off the Midland Highway, before the town centre of Bannockburn and surrounded by picturesque farmland and panoramic views of the Moorabool Valley. This meticulously maintained property is sure to impress at every corner and has been carefully created to utilize the space to its full potential! Starting with a tree-lined driveway leading you to the charming homestead boasting striking polished floorboards throughout and huge windows allowing an abundance of natural light to stream through. A huge open plan living and formal dining area is serviced by a coonara wood fire and split system air conditioner. The kitchen has been updated and offers stone benches, a 900mm electric oven, induction cooktop and dishwasher whilst adjoining the dining area. Luxurious plush carpets line the 3 bedrooms, whilst the master bedroom boasts a beautiful bay window, its own split system and built in robe. The family bathroom has been updated and consists of stone benches, shower and full bath. Outside, discover a haven for entertainers and nature lovers with a huge, peaked roof undercover pergola area and an enclosed backyard, perfect for gatherings with family and friends and the ideal space to unwind after a long day. Currently set up for horses, the land lends itself to a variety of uses including hobby farming or equestrian pursuits. Divided into 3 large paddocks, 2 including double shelters. A wooden round yard and enclosed 60 x 20m grass arena offer the perfect place to safely ride and exercise your horses whilst the stable and powered tack room provide plenty of storage space. Car enthusiasts don't miss out either as the property also boasts a 4-car garage to the left side of the home whilst a huge 4 bay machinery shed with 1 open bay, 2 with roller doors and 1 with pedestrian access is fully concreted, powered and has been built with extra height to accommodate horse floats, boats, trailers, a hoist or extra vehicles. Additional property features include solar panels, 3 water tanks and town water, ensuring a sustainable and convenient lifestyle. Wine lovers will enjoy the fruits of maintaining the 100 shiraz vines each year. Only moments from Bannockburn, Geelong CBD only 25 minutes away and easy access to Melbourne and the Surf Coast, this property allows you to spoil yourself with country living whilst not having to compromise on any city conveniences. Don't miss out on the opportunity to own your own rural retreat. Contact me today to arrange an inspection and make this property your own slice of paradise! *All information about the property has been provided to Hayeswinckle by third parties. Hayeswinckle has not verified the information and does not warrant its accuracy or completeness. Parties should make and rely on their own enquiries in relation to this property.