

53 Moyran Parade, Grays Point, NSW 2232



Sold House

Saturday, 2 December 2023

53 Moyran Parade, Grays Point, NSW 2232

Bedrooms: 4

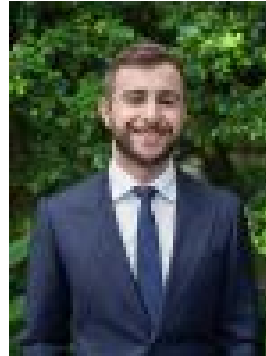
Bathrooms: 3

Area: 1031 m2

Type: House



Dino Salvatore
0295258066



Marcus Salvatore
0433388862

Contact agent

Sitting proudly amongst the treetops & embracing elevated views of Royal National Park, this private family oasis offers an extraordinary blend of ultra-modern style & enviable functionality. The front of the property is encased by a majestic wonderland of native trees & picturesque gardens that frame the wrap around balcony & unveil the newly renovated home. The internal layout showcases three generous bedrooms, open plan chef's kitchen that flows onto a tiered dining & living room, a separate teenager's retreat/optional self-contained flat & multiple outdoor entertaining zones that seamlessly integrates with the internal living areas.

- Open plan living & dining room featuring combustion fireplace & large wrap around alfresco capturing views of Royal National Park
- Kitchen fit with stone island bench, Westinghouse 900mm oven & sliding window over double sink opening to outdoor bar
- Master suite offering a massive walk-in robe, ultra-modern ensuite with frameless shower & private balcony with leafy outlook
- Two additional bedrooms with built-in robes, ceiling fans & large windows filtering the natural light + separate study nook with shelving
- Sophisticated main bathroom with combined bath/shower + separate internal laundry with ample cabinetry & external access
- Teenagers retreat/optional self-containing granny flat on bottom including walk-in robe, ensuite, wet bar & secluded balcony
- Entertaining terrace fit with built-in seating around outdoor bar & extending up to grassed yard containing chicken coop & tree house
- Ample on-street parking options + oversized under house storage with easy access

Approximate Land Size: 1031sqm This home is set at the end of a quiet cul-de-sac & is only a short distance to local waterways, Swallow Rock Boat Ramp, Royal National Park, Jack Gray cafe, Grays Point Public School & is in Kirrawee High School catchment.