

53A Threlfall Street, Eastwood, NSW 2122

Duplex/Semi-detached For Sale

Friday, 5 April 2024



53A Threlfall Street, Eastwood, NSW 2122

Bedrooms: 5

Bathrooms: 4

Parkings: 2

Area: 400 m2

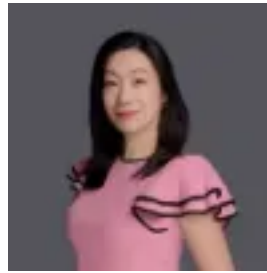
Type:

Duplex/Semi-detached



Andy Lin

0298697788



Julie Zhang

0298697788

AUCTION

A true family sanctuary holding a blissfully peaceful position welcome to number 53a Threlfall Street in Eastwood, brand new 5-bedroom 4-bathroom family residence and just wait to you see inside. With a double brick and concrete slab construction the quality is exceptional and soaring ceilings draw you into the double-height entry. The Miele marble kitchen is a striking centrepiece with its beautiful Parisi gold hardware and leading into a butler's pantry it's all about entertaining. Speaking of entertaining you have a full outdoor kitchen, and the covered alfresco space is perfect for those long Sunday lunches. The front lawn is great for children to play and you are footsteps to granny Smith memorial park and surrounded by well-regarded schools. You'll also love features like the marble wrapped fireplace and the joinery throughout promises lots of storage. The main bathroom on this level again features that beautiful stone in fact so does the laundry and butler's pantry denoting the exceptional quality you'll find throughout. There is a versatile 5th bedroom on the entry level which would make a great home office and upstairs is where you'll find the further accommodation of 4 bedrooms. 2 have ensuites but of course the main bedroom has some extra luxury details a full width balcony a walk-in robe with a glam station or study nook it's such a well-considered design and the En-suite has a huge rain shower to wash away the day. We also recommend taking a magnesium bath here in upstairs main bathroom because it truly is the ultimate in relaxation. There's internal access to a garage and you have coveted features like ducted zoned air conditioning, sensor lighting, keyless entry and video security. This is such a stunning property, unsurpassed quality in a peaceful leafy pocket and brand new what a way to live.

Main Features:

- *Brand new contemporary architecture masterpiece with over 22 meters (approx.) frontage
- *Sun-drenched open living and dining area leading to a large alfresco
- *Seamless flow from indoor living to outdoor alfresco perfect for family entertaining
- *4 luxury bathrooms including 2 master ensuites with nature marble
- * 5th bedroom/Home office downstairs perfect for in laws/guests
- *Double automatic locked up garage with internal access plus plenty of off-street parking
- * Deluxe kitchen with marble island bench and breakfast bar. It also features Miele appliances, gas cooking, and a lovely butler's pantry.
- *Large outdoor entertaining with covered dining or BBQ zone overlooking the secure level yard perfect for furry friends and small children
- *Other Features: Double glaze glass throughout, fully ducted air conditioning with multi zones, intercom, internal laundry, Marble wrapped fireplace and marble vanities etc.
- *Zone for Denistone East Public School, Epping Boys High School and Ryde Secondary College

Disclaimer: All information contained herein is gathered from sources we deem to be reliable. However, we cannot guarantee its accuracy and interested persons should rely on their own enquiries.