

54 Elster Avenue, Elsternwick, VIC, 3185

Sold House

Thursday, 13 April 2023

54 Elster Avenue, Elsternwick, VIC, 3185

Bedrooms: 4

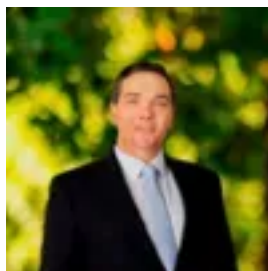
Bathrooms: 2

Parkings: 2

Type: House



Bill Stavrakis
0395248444



Sven Fischer

The one you have been waiting for

This stunning solid brick Edwardian residence is set perfectly on a glorious north facing, elevated and private garden allotment of 698m². Ideally located in this prime, tightly held pocket of Elsternwick that is only a gentle stroll from Martin Street village.

A 5-minute walk will have you sipping lattes or cocktails at one of the many cafes or bars along the village strip.

Catching the train to the MCG or CBD, educating children at one of the many elite schools or lapping up the best of bayside living on the Pt Phillip foreshore or at Gardenvale Park. This pristine home is now set for the next chapter.

Behind a secure front fence the home boasts a commanding presence. Framed by the stunning established garden and ample off-street parking for 3 to 4 vehicles.

You are welcomed by the inviting traditional entrance hall with lead light glass and decorative ceilings

4 excellent double bedrooms all feature extensive BIR. Separate study with built in cabinetry

The Master boasts a large dressing room with ample storage and beautifully tiled ensuite with twin vanities.

With a glorious north aspect over the garden the blissful open plan dining and living area features extensive custom joinery and spills out to the alfresco entertaining zone.

The large well-appointed kitchen offers stainless steel appliances and butler pantry along with endless stone bench tops and cavernous storage.

An additional living area is perfect for larger families requiring separate zones for kids and adults alike.

A sparkling central family bathroom accommodates perfectly, Guests powder room

Additionally, the large separate laundry and storeroom complete the home

Creature comforts include gas ducted heating, separate AC's, remote control off street carparking, garden irrigation, superb contemporary decor and so much more.

The large north facing garden allotment measures 16.0 x 43.7=698m² approx. It really is the perfect size block