

54 Neuparth Road, Croydon North, Vic 3136



Sold House

Friday, 11 August 2023

54 Neuparth Road, Croydon North, Vic 3136

Bedrooms: 3

Bathrooms: 1

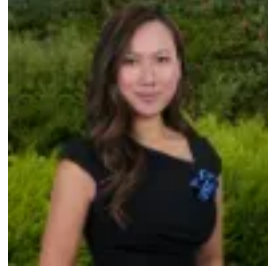
Parkings: 2

Area: 1037 m2

Type: House



Sue Kelly Brown
0418347888



Trisha Tan
0421667096

Contact agent

Welcome to this stunning modern split-level house, boasting forever rear views that will leave you breathless. Proudly perched, in a sought-after street lined with large properties and luxury houses, this impressive entertainer on 1,036 sqm (approx.), is ready to be relished by one lucky family, or snapped up for its prime redevelopment possibilities (STCA). As you step onto the fully enclosed property, you are greeted by a front fence and two entry gates, ensuring both security and privacy. The stone finish driveway and paths, along with paved surrounds, add an elegant touch to the overall aesthetic. The low-maintenance landscaped garden is a testament to modern design, providing a beautiful backdrop to the property. Upon entering the house, you are welcomed by a spacious entry that sets the tone for what lies ahead. The open-plan living area is flooded with natural light, creating a bright and inviting atmosphere. With three separate living zones, there is ample space for relaxation, entertainment, and family activities. Additionally, a separate gymnasium on the ground level offers the perfect space to stay fit and healthy. The kitchen is a chef's dream, featuring a bright and modern design with breathtaking views. Equipped with all-new appliances, it is a haven for culinary enthusiasts. Adjacent to the kitchen, a separate family dining room provides a cosy and intimate setting to enjoy meals while taking in the captivating views. All three double bedrooms feature large built-in robes, offering plenty of storage space for your belongings. Throughout the house, you'll find ample cupboard and storage options, ensuring a clutter-free living experience. The generous modern bathroom is a sanctuary of relaxation, boasting a walk-in shower, separate bath, and a large modern vanity. A separate toilet adds convenience and privacy for you and your guests. The family-sized separate laundry is equipped with built-in cupboards, providing practical storage solutions for your laundry needs. Moving outside, the rear entertaining deck offers a perfect spot to relax and enjoy the stunning views. The generous-sized backyard invites endless possibilities, whether it be creating your own oasis or exploring potential rear property development options. In summary, this modern split-level house offers a harmonious blend of style, functionality, and breathtaking views. With its fully enclosed property, low-maintenance landscaping, spacious living areas, well-appointed kitchen, ample storage options, and rear property development potential, this home truly presents an exceptional opportunity for the discerning buyer. Inclusions: separate gymnasium on ground level, zoned heating & air conditioning, modern fixed floor coverings, luxury carpets, modern light fittings, new window furnishings, security alarms, new kitchen appliances. Walk to street pocket parks, flanked by reserves and walking trails including Hochkins Ridge Flora Reserve and close to Griff Hunt Reserve. In close proximity to shopping and restaurant precincts including Chirnside Park Shops, cinemas, Exeter Rd shops, Croydon Central, McAdam Square and Eastland. Handy to Luther College, Oxley College, Yarra Valley Grammar, Croydon Hills Primary, Good Shepherd Primary and a host of preschools. Minutes to buses, Croydon Train Station and Eastlink.