

**54 Prince Edward Street, Blackheath, NSW 2785**



**Sold House**

Sunday, 24 December 2023

54 Prince Edward Street, Blackheath, NSW 2785

**Bedrooms: 2**

**Bathrooms: 1**

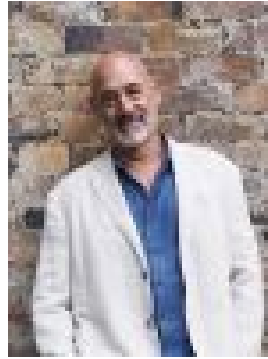
**Parkings: 2**

**Area: 481 m2**

**Type: House**



Adele Colman  
0414876211



Lewis Thyer  
0430043806

**\$810,000**

Here it is! A classic Blackheath weatherboard cottage that has character in spades and move in ready. Set on a manageable 481M2 gently sloping block this gorgeous 1920's home is in a prime position just up from the memorial Park and the ever-popular Blackheath swimming pool and playground. It's walk to town too, just down the road from the restaurant precinct with hatted dining, wine and Taco bars and cafes. The cottage itself shyly peeks from behind a mature Rhododendron but upon entering a whole world of mountains charm reveals itself. There is a sweet entry vestibule that then looks into a sunroom with a wall of double glazed windows - this room is currently used as a dining room but could easily be a second and very sunny living room. If you move straight through the entry vestibule the lounge room will reveal itself with lovely original windows and a cosy slow combustion fire place. Off this room on the northern side is the main bedroom which also connects to the sunroom, how typical of these houses to interconnect from room to room! Moving further through there is a renovated kitchen with good storage off which is the second bedroom with the same northern aspect as the main bedroom. The bathroom is modern and spacious too. But there is a lot more to this perfectly formed jewel, take the steps down to the garden to find a large and wide single car garage, a studio behind and a sweet garden that is so private you could be in the middle of nowhere! There is a rainwater tank tucked under the studio which has a pump and is for watering the gardens, and the laundry is a secret squirrel treat as it's in a room under the house! So come have a look, this house is so sweet and charming and the location is perfect!

- Manageable 481M2 Block
- Move in ready
- Garage and Studio
- Fresh bathroom and kitchen
- Gas Central Heating