

54 Serle Street, Doreen, Vic 3754

CHWYLA

Sold House

Friday, 16 February 2024

54 Serle Street, Doreen, Vic 3754

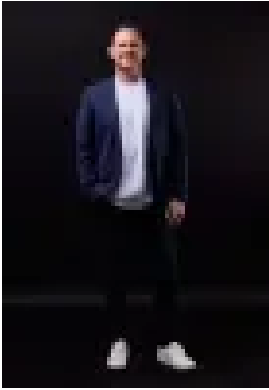
Bedrooms: 4

Bathrooms: 2

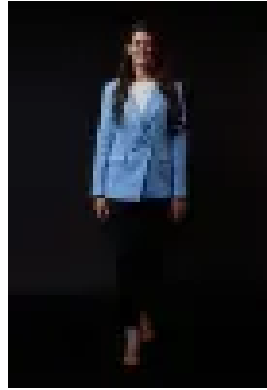
Parkings: 2

Area: 636 m2

Type: House



Paul Chwyla
0386009995



Stacy Richards
0386009995

\$872,500

Make more of : 636m² block 4 Four bedrooms 2 Two bathrooms 2 Double garage 2 Double gated side access into rear parking 2 Heated pool 2 Security door 2 High ceilings 2 Downlights 2 Feature lighting 2 Timber floating boards 2 Blinds 2 Stone kitchen benchtops 2 900mm appliances 2 Dishwasher 2 Walk-in pantry 2 Master with walk-in robe 2 Three bedrooms with mirrored built-in robes 2 Linen storage 2 Ducted heating 2 Evaporative cooling 2 Ceiling fans 2 Covered alfresco 2 Exposed aggregate to entertaining area 2 Glass panel pool fencing 2 Low maintenance landscaping 2 Veggie gardens 2 Side courtyard area with veggie box 2 95m to Walling Way bus stop 2 550m to Ashley Park Primary School 2 600m to Jorgensen Park 2 900m to Riverstone shops 2 900m to Riverstone Park Playground 2 The initial appeal – A four bedroom family home with stone kitchen benchtops, 900mm appliances, a walk-in pantry, mirrored robes and bedrooms with views across the pool area. You'll also be a 1ish minute walk to the bus stop and a 12ish minute walk to Riverstone shops. That's a win. The main attraction – Imagine entertaining by your heated pool [glass panel pool fencing, exposed agg, immac landscaping], plus double gated side access into rear parking for all your toys, and a fully loaded veggie garden out the back. All this, on a big, 636m² block. Your journey here starts this Saturday.