

**55 Lisbeth Avenue, Donvale, Vic 3111**

**Residential Land For Sale**

Tuesday, 30 April 2024

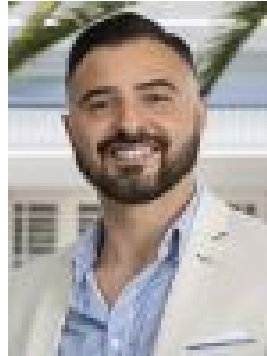
55 Lisbeth Avenue, Donvale, Vic 3111

Area: 721 m2

Type: Residential Land



Robert Groeneveld  
0404881634



Kamran Atai  
0403628836

**\$800,000**

With picturesque surrounds and a prominent position close to all this prized pocket has to offer, this spacious suburban block of 721 sqm (approx.) promises a prosperous future for you and your family. In a chance to snap up a substantial parcel of land rarely seen in such a lifestyle location, the focus here will undoubtedly be on building your stunning brand new home (STCA) or undertaking a modern multi-dwelling development in a prime Eastern suburban setting where there are very limited land offerings of this magnitude left. With an abundance of street frontage and a great neighbourhood, the location and opportunity here simply cannot be understated. On the doorstep of the Mullum Mullum Reserve and Eastlink Trail, within walking distance to Mullauna College and Mitcham Primary School, close to Mitcham Private Hospital, Mitcham Shopping Centre and the Mitcham Train Station, with great connection to Mitcham Rd, Springfield Rd, Springvale Rd, Whitehorse Rd, the Maroondah Highway and Eastlink.