

55 Moroka Ave, Weir View 3338, Weir Views, Vic 3338

House For Rent

Friday, 24 May 2024

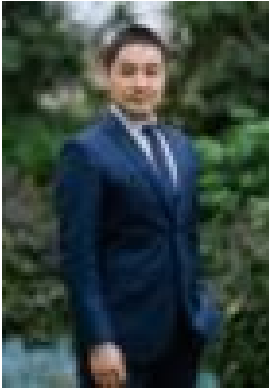
55 Moroka Ave, Weir View 3338, Weir Views, Vic 3338

Bedrooms: 4

Bathrooms: 2

Parkings: 2

Type: House



Leslie Yin

\$480 per week

Within walking distance to Opalia Plaza. Two Train Stations and Woodgrove shopping centre are nearby. This property features:- Master bedroom with en-suite and walk in robe- Other three bedrooms with built in robes- Open plan living and dining area- Ducted heating throughout- Split system AC- Security System - Landscaped front and back yards- Remote control double garage. This home is within minutes away from the Opalia shopping Centre, early learning centre & schools and the Western Freeway providing easy and direct access to Melton Train Station, Melbourne CBD, Ballarat CBD and Melbourne International Airport. You will be connected to everything including being very close to Melton Reservoir and Werribee River, it is a perfect place for family outings, picnics, fishing and passive recreation. Be the first to live in this brand-new house! Inspection is sure to impress. Please call 0433 540 119 today to arrange an inspection.