

55 Pech Avenue, Jindera, NSW 2642



Sold House

Friday, 3 May 2024

55 Pech Avenue, Jindera, NSW 2642

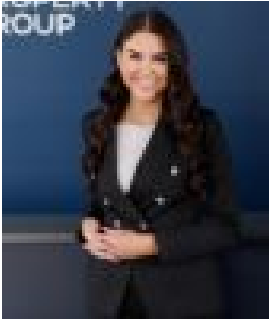
Bedrooms: 3

Bathrooms: 2

Parkings: 2

Area: 639 m2

Type: House



Kate McAuley

0417886539

\$595,000

Welcome to the thriving metropolis of Jindera, this 2 year old home is ready to become your new sanctuary. Nestled within the tranquil streets and close-knit community, this home offers a haven away from the bustle of city life, yet is conveniently located just a short 19 minute drive from the Albury CBD for all your daily needs. Step inside to discover a neutral colour palette and modern comfort. The spacious living area beckons with its warm ambiance, perfect for unwinding after a long day or hosting gatherings with loved ones. Large windows invite natural light to dance throughout the rooms, creating a bright and inviting atmosphere. As the day draws to a close, retire to one of the three bedrooms, each offering a peaceful retreat for rest and relaxation. The master bedroom offers a walk in robe and en-suite bathroom, providing a private oasis to rejuvenate body and mind. Outside, the backyard offers endless possibilities for outdoor enjoyment. From morning coffee on the alfresco to evening gatherings around the fire pit, this space is your own personal haven in nature. An added bonus is the double side gates with rear yard access. Features include:- 3 bedrooms, master with ensuite and WIR- Large open plan living and dining area- Ducted heating and cooling- Fully landscaped yard with alfresco and fire pit areas- Rear side access- Double lock up garage Jindera boasts local shops, restaurants, parks, and more, all just moments from your doorstep. Plus, with excellent schools and a friendly community atmosphere, you'll find everything you need to thrive right here. Don't miss your chance to make this charming retreat your own. Call Kate McAuley on 0417 886 539 today to schedule a time to experience small-town living at its finest!