

55 Swallow Drive, Erskine Park, NSW 2759



House For Rent

Saturday, 4 May 2024

55 Swallow Drive, Erskine Park, NSW 2759

Bedrooms: 3

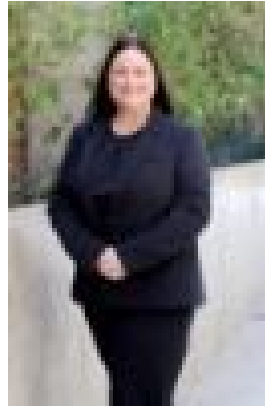
Bathrooms: 1

Parkings: 1

Type: House



Mikayla Wood
(02)47323333



Lisa Portelli
(02)47323333

\$620 per week

This well presented brick veneer home is located with close proximity to Erskine Park Shopping Complex, Local Schools and the M4. This home boasts: 3 bedrooms offering built in robes to all rooms and carpet flooring L shaped lounge and dining area with floating flooring Spacious kitchen with stainless steel gas cooktop and oven plus a dishwasher Ducted air conditioning throughout Neat 3 way bathroom Plantation shutters to front windows of the home Outdoor entertaining area Carport behind roller door Large internal laundry Easy care yards Water usage charges included Sorry, no pets allowed Available NOW (NOTE: Granny flat located to rear of property is rented separately to the main house)